

Руководство пользователя

DigitalRing Monocle

© 2009
Компания DigitalRing
www.d-ring.ru

I		4
II		5
III		5
IV		5
1	DigitalRing Monocle	6
2	7
3	8
4	9
5	10
6	10
V		
	DigitalRing Monocle	11
1	11
	11
	11
	11
	12
	12
	13
	13
2	16
	16
	17
	17
	21
	IP-	25
	28
	28
	Securika Monocle	34
3	39
	39
	DigitalRing Monocle	40
4	41
VI		
	DigitalRing Monocle	41

1	Monocle	41
2	Monocle	42
	42
	42
	44
	44
	44
	44
	47
	/ (PTZ).....	49
	51
	52
	(/).....	54
	55
	56
	57
	57
	58
	58
	59
	61
	61
	61
	63
VII	DigitalRing	
	Monocle	64
1	64
2	66
3	69
VIII		71
1	71

1

"DigitalRing Monocle"

IP-

"DigitalRing"

DigitalRing.

© 2009

: 3.0.0
DigitalRing.

DigitalRing

"DigitalRing Monocle"
DigitalRing

Windows 95, Windows 98, Windows 2000, Windows XP, Windows VISTA, Windows
Server 2003, Windows Server 2008, Windows 7,
Microsoft ().

Intel, Celeron, Pentium, Xeon, Core Duo, Core Quad
Intel.

Microsoft Windows 2000 / XP / Vista

"DigitalRing Monocle" ().

"DigitalRing Monocle"



DigitalRing

"DigitalRing Monocle"

"DigitalRing"

Monocle",

- DigitalRing: <http://www.d-ring.ru/>
- DigitalRing Monocle: <http://www.d-ring.ru/products/video/monocle>
: support@d-ring.ru

2

1. ;
2. "... "
3. "... (, , . .)" :
- (,)
4. " / / / "
5. 
6. [_____](#)

3

"DigitalRing Monocle"
MS Windows

- (, . .);
- , .

4**DigitalRing Monocle,**

4.1

DigitalRing Monocle

DigitalRing Monocle () IP- ()

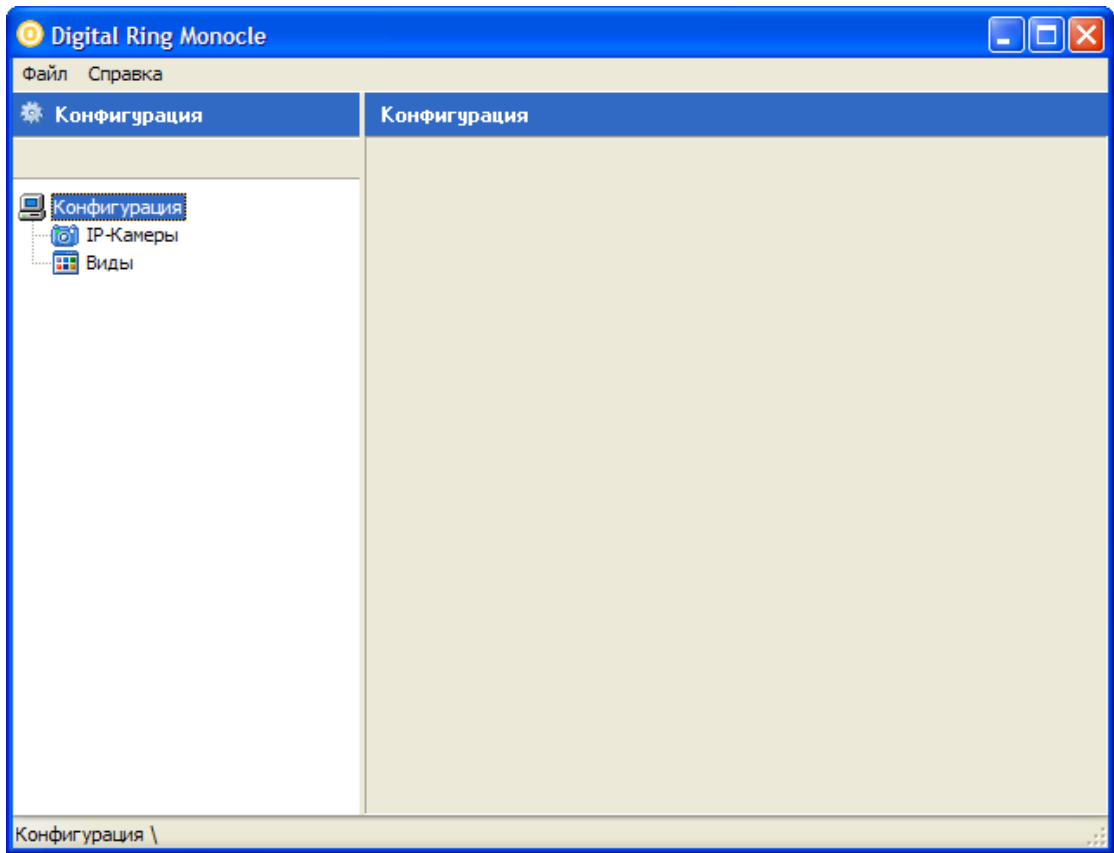
() .

.

.

IP . ,

.



Monocle

DigitalRing Monocle IP-

"DigitalRing".

"DigitalRing"

IP-

.

"DigitalRing" , , ,

.

"DigitalRing" :

• ;

- (,);
- ;
- ;
- ;
- IP-

"DigitalRing"

DigitalRing",
www.d-ring.ru

4.2

DigitalRing (- "DigitalRing" (-),
).

/

1. (")
), " ("
2. .
3. 1 ()
 ;
4. (/);

5. ,
6. ,
7. /
8. ,
9. ,
10. .
11. ,
12. ,
13. / -

4.3

" DigitalRing Monocle", "

" "

IP-

IP- ()

IP-

WEB , (IP-)

"DigitalRing Monocle"

IP-
IP

).

WEB-

(

(

)

IP-

-

"DigitalRing".

-

(

).

MotionJPEG

JPEG,

IP-

).

(

FPS

4.4

MPEG4/h264

IP-

IP-

MotionJPEG JPEG.

MPEG2/

).

(

- 150 ().

- ().

- 25 ().

- MotionJPEG.

- MotionJPEG

- AVI 0.5-16 / BMP JPEG.

HTTP

4.5

IP- ().

Windows 2000, Windows XP, Windows 2003, Windows Vista, Windows 7.

"DigitalRing Monocle"

IP- **HTTP JPEG MotionJPEG.**

MPEG2, MPEG4, H264, ().

4.6

• - () ();

-); (/
- (/);
- USB .

5 DigitalRing Monocle

5.1

5.1.1

"DigitalRing Monocle" Windows 2000 (32- Service Pack 3), Windows XP (Service Pack 2), Windows 2003 Server, Windows Vista, Windows 2008 Server, Windows 7.

64-

Windows.

5.1.2

"DigitalRing Monocle" Intel Celeron 500 M .
 128 Windows 2000 / XP 512
Monocle", - **"DigitalRing"**

5.1.3

DigitalRing Monocle

5.1.4

5.1.5

Monocle"	IP-	"DigitalRing"	"DigitalRing"
100	-	1	1
100	-	100	1
		70%	
1	- 700	100	- 70
WiFi		WI-FI	(
10-40%		(1...8)
	IP-		
);		(
•	320x240	- 15360	(15);
•	352x288	- 20480	(20);
•	640x480	- 46080	(45);
•	704x576	- 61440	(60);
:			
		=	*
		*	.

1.

$$16 \quad 704 \times 576 \quad 7 \text{ FPS} \quad :$$

$$61440 * 7 * 16 = 6881280 \quad 6881280 * 8 = 55050240 \quad , \dots$$

$$50 \quad 100$$

2.

$$7 \text{ FPS} \quad 704 \times 576 \quad 100$$

$$?$$

$$70 \quad (\quad 70 * 1024 * 1024 / 8 = 9175040 \quad) -$$

$$100 \quad :$$

$$9175040 / (61440 * 7) = 9175040 / 430080 = \quad 21, \dots 21$$

$$1$$

	()	1	100
320x240	15360	5697	570
352x288	20480	4272	427
640x480	46080	1899	190
704x576	61440	1424	142

5.1.6

- 1.
 2. Firewall.
- 6 - HTTP : (- -)

"DigitalRing" !

5.1.7

"DigitalRing Monocle" IP-
 HTTP JPEG MotionJPEG. MPEG2/MPEG4/h264,
 (

).

"DigitalRing Monocle"

IP-

: http://www.d-ring.ru/support/hardware_list**Axis Communications**

Axis 200+, Axis 205, Axis 206, Axis 206M, Axis 206W, Axis 207, Axis 207W, AXIS 209FD-R, Axis 210, Axis 2100, Axis 210A, Axis 211, Axis 2110, Axis 211A, Axis 212, Axis 2120, Axis 213 PTZ, Axis 2130 PTZ, Axis 214 PTZ, Axis 215 PTZ, Axis 216 FD, Axis 221, AXIS 223M, Axis 225 FD, Axis 231D PTZ, Axis 232D PTZ, Axis 233D, Axis 2400 Server, Axis 2400+ Server PTZ, Axis 2401 Server, Axis 2411 Server, Axis 241Q or QA Server PTZ, Axis 241S or SA Server PTZ, Axis 2420 PTZ, Axis 247S, Axis 207MW, Axis M1011, Axis M1011-W, Axis M1031-W, Axis P1311, Axis 211M, Axis 211W, Axis Q1755, Axis 209FD, Axis 209MFD, Axis 209MFD-R, Axis 216FD-V, Axis 216MFD, Axis 216 MFD-V, Axis P3301, Axis P3301-V, Axis M3011, Axis 212 PTZ-V, Axis 215 PTZ-E, Axis 231D+, Axis232D+, Axis 243SA, Axis Q7401, Axis M7001, Axis 240Q, Axis 243Q Blade, Axis Q7406 Blade.

Airlink101

Airlink101 AIC250, Airlink101 AIC250W, Airlink101 AICAP650, Airlink101 AICAP650W, Airlink101 AICN500, Airlink101 AICN500W, Airlink101 AICN777W, Airlink101 AICN747W, Airlink101 AICN747.

Avermedia

AVerMedia NC100 IP Camera

4XEM Corporation

4XEM IPCAMW40, 4XEM IPCAMW45, 4XEM IPCAMW50, 4XEM IPCAMWLPTG, 4XEM IPCAMWLPTZ, 4XEM IPCAMWPT, 4XEM IPCAMWPTZ

Arecont Vision

Arecont 1300, Arecont 2100, Arecont 3100, Arecont 3130, Arecont 5100, Arecont 8180, Arecont 8360

AVIOSYS International

Aviosys IP Kamera 9060, Aviosys IP Kamera

Bosch Group

Bosch NWC-0455-10P, Bosch NWC-0495-10P, Bosch NWC-0700, Bosch NWC-0800, Bosch NWC-0900, Bosch NWD-455, Bosch NWD-495

Canon Inc.

Canon Network Camera

D-Link Corporation

D-Link DCS-2000, D-Link DCS-2100, D-Link DCS-2100+, D-Link DCS-2100G, D-Link DCS-3000 series, D-Link DCS-5300, D-Link DCS-5300G, D-Link DCS-5300W, D-Link DCS-6000 series, D-Link DCS-6112, D-Link DCS-6620, DLink DCS-900, DLink DVS-104

Intellinet

CCD Camera (550796,503181), CCD Camera (550796,503181), CCD IR Night Visio Camera (550291,550314), CCD IR Night Visio Camera (550291,550314), CMOS 1_3 Megapixel Camera Digital PTZ (550338), CMOS 1_3 Megapixel Camera Digital PTZ (550338), CMOS 2_0 Megapixel Camera Digital PTZ (550468), CMOS 2_0 Megapixel Camera Digital PTZ (550468), CMOS Camera (503365), High Speed Dome 30x (550260,550277), Mini Speed Dome 10x (550437,550451), Vandal Proof Fixed Dome (550406,550420), Vandal Proof Fixed Dome (550406,550420), Vandal Proof Fixed Dome IR Day-Night (550413,550444), Vandal Proof Fixed Dome IR Day-Night (550413,550444), Wireless CCD Camera (550178,550253), Wireless CCD Camera (550178,550253), Wireless CCD IR Night Visio Camera (550307,550321), Wireless CCD IR Night Visio Camera (550307,550321), Wireless CMOS 1_3 Megapixel Camera Digital PTZ (550345), Wireless CMOS 1_3 Megapixel Camera Digital PTZ (550345), Wireless CMOS 2_0 Megapixel Camera Digital PTZ (550482), Wireless CMOS 2_0 Megapixel Camera Digital PTZ (550482)

IQinVision

IQeye300 Series IP Camera, IQeye501 Series IP Camera, IQeye600 Series IP Camera

JVC Corporation

JVC Network Camera

Merit Lilin Ent. Co., Ltd.

Meritlilin PIH 7625 IP, Meritlilin PIH-7000, Meritlilin PIH-7622, Meritlilin PIH-7625

LevelOne

LevelOne FCS-1010

Linksys

Linksys pvc2300, Linksys wvc200, Linksys wvc2300, Linksys wvc54g

Lumenera Corporation

Lumenera Le045, Lumenera Le075, Lumenera Le075C-DN, Lumenera Le11059, Lumenera Le165, Lumenera Le165C-DN, Lumenera Le175, Lumenera Le175C-DN, Lumenera Le259, Lumenera Le275, Lumenera Le275C-DN, Lumenera Le375, Lumenera Le375C-DN, Lumenera Le575, Lumenera Le575C-DN

MOBOTIX AG

D12Di-IT, D12Di-Sec, D22M-IT-Night, D22M-IT, D22M-Sec-Night, D22M-Sec, D22Mi-Basic, M1, M10, M12D-IT-DNIGHT, M12D-Sec-DNIGHT, M12D-Sec, M22, M22M-IT, M22M-Sec-CSVario, M22M-Sec-Night-CSVario, M22M-Sec-Night, M22M-Sec, V10, V12D-Sec, V12M-Sec

Panasonic

BB-HCE481, BB-HCM110, BB-HCM311, BB-HCM331, BB-HCM371, BB-HCM381, BB-HCM403, BB-HCM481, BB-HCM511, BB-HCM515, BB-HCM531, BL-C1, BL-C10, BL-C11, BL-C111, BL-C131, BL-C20, BL-C30, KX-HCM1, KX-HCM10, KX-HCM130, KX-HCM170, KX-HCM180, KX-HCM2, KX-HCM230, KX-HCM250, KX-HCM270, KX-HCM280, KX-HCM8, WV-NF284, WV-NM100, WV-NP1004, WV-NP472, WV-NS202, WV-NS324, WV-NW474S

PiXORD Corporation

Pixord 100, Pixord 120, Pixord 200, Pixord 205, Pixord 240, Pixord 241, Pixord Video Server 1000, Pixord Video Server 2000, Pixord Video Server 4000

PLANET Technology Corporation

Planet ICA-210, Planet IVS-100, Planet ICA-100, Planet ICA-100PE, Planet ICA-108, Planet ICA-100W, Planet ICA-110, Planet ICA-110W, Planet ICA-150, Planet ICA-300, Planet ICA-310, Planet ICA-312, Planet ICA-350, Planet ICA-500, Planet ICA-501, Planet ICA-525, Planet ICA-530, Planet ICA-600, Planet ICA-601, Planet ICA-651, Planet ICA-700, Planet ICA-M230, Planet IVS-110, Planet ICA-750, Planet ICA-120, Planet ICA-230.

Sony Corporation

Sony SNC-CS10, Sony SNC-CS11, Sony SNC-CS3N, Sony SNC-CS3P, Sony SNC-CS50N, Sony SNC-CS50P, Sony SNC-DF40N, Sony SNC-DF40P, Sony SNC-DF70N, Sony SNC-DF70P, Sony SNC-M1, Sony SNC-M1W, Sony SNC-M3, Sony SNC-M3W, Sony SNC-P1, Sony SNC-P5, Sony SNC-RX550N, Sony SNC-RX550P, Sony SNC-RZ25N, Sony SNC-RZ25P, Sony SNC-RZ30N, Sony SNC-RZ30P, Sony SNC-RZ50N, Sony SNC-RZ50P, Sony SNC-Z20N, Sony SNC-Z20P

Toshiba Inc.

Toshiba IK-WB02A, Toshiba IK-WR01A

TRENDnet

TRENDnet TV-IP100, TRENDnet TV-IP100W, TRENDnet TV-IP201, TRENDnet TV-IP201P, TRENDnet TV-IP201W, TRENDnet TV-IP300, TRENDnet TV-IP301, TRENDnet TV-IP301W, TRENDnet TV-IP400, TRENDnet TV-IP400W, TRENDnet TV-IP410.

VIVOTEK Inc

Vivotek FD6111V, Vivotek FD6112V, Vivotek FD6121V, Vivotek FD6122V, Vivotek FD7131, Vivotek IP2111, Vivotek IP2112, Vivotek IP2121, Vivotek IP2122, Vivotek IP3111, Vivotek IP3112, Vivotek IP3121, Vivotek IP3122, Vivotek IP3132, Vivotek IP3133, Vivotek IP3135, Vivotek IP3136, Vivotek IP6112, Vivotek IP6117, Vivotek IP6122, Vivotek IP6127, Vivotek IP7131, Vivotek IP7132, Vivotek IP7135, Vivotek IP7137, Vivotek IP7138, Vivotek IP7139, Vivotek IP7151, Vivotek IP7152, Vivotek PT3112(22), Vivotek PT3114(24), Vivotek PZ6112(22), Vivotek PZ6114(24), Vivotek SD6112V, Vivotek SD6122V, Vivotek VS2101, Vivotek VS2402, Vivotek VS2403, Vivotek VS3100, Vivotek VS3102, Vivotek VS7100

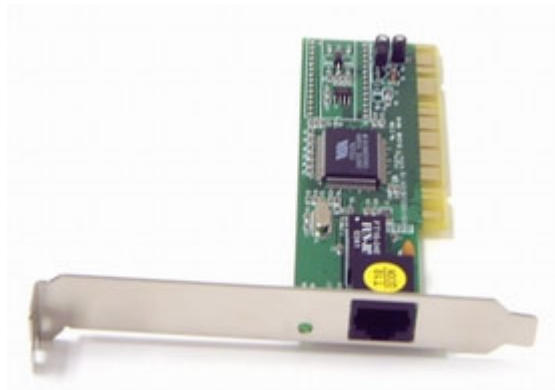
5.2**5.2.1**

5.2.1.1

5.2.1.1.1



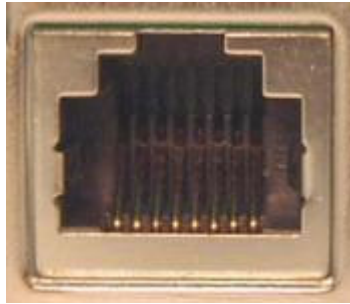
RJ-45:



45:

PCI-

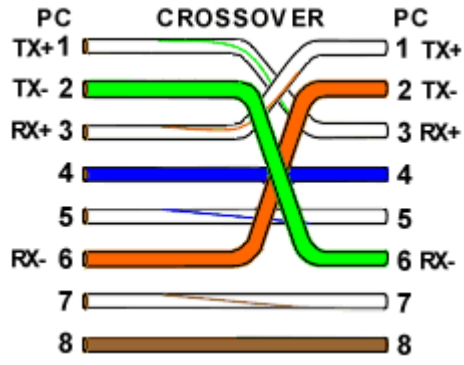
RJ-



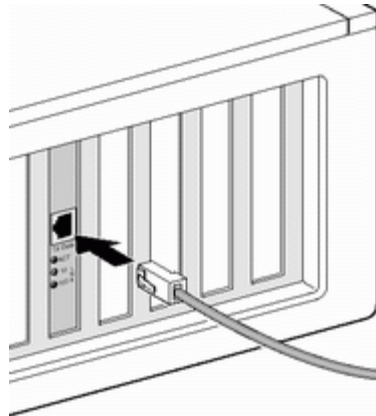
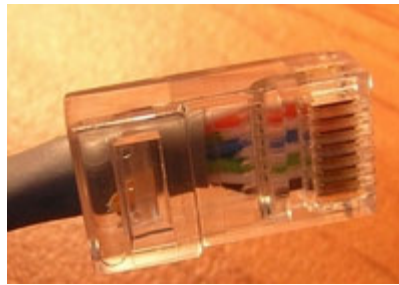
- 1. ,
- 2. PCI-
- 3. ,



- 4.
- 5.
- 6.



(T 568B)

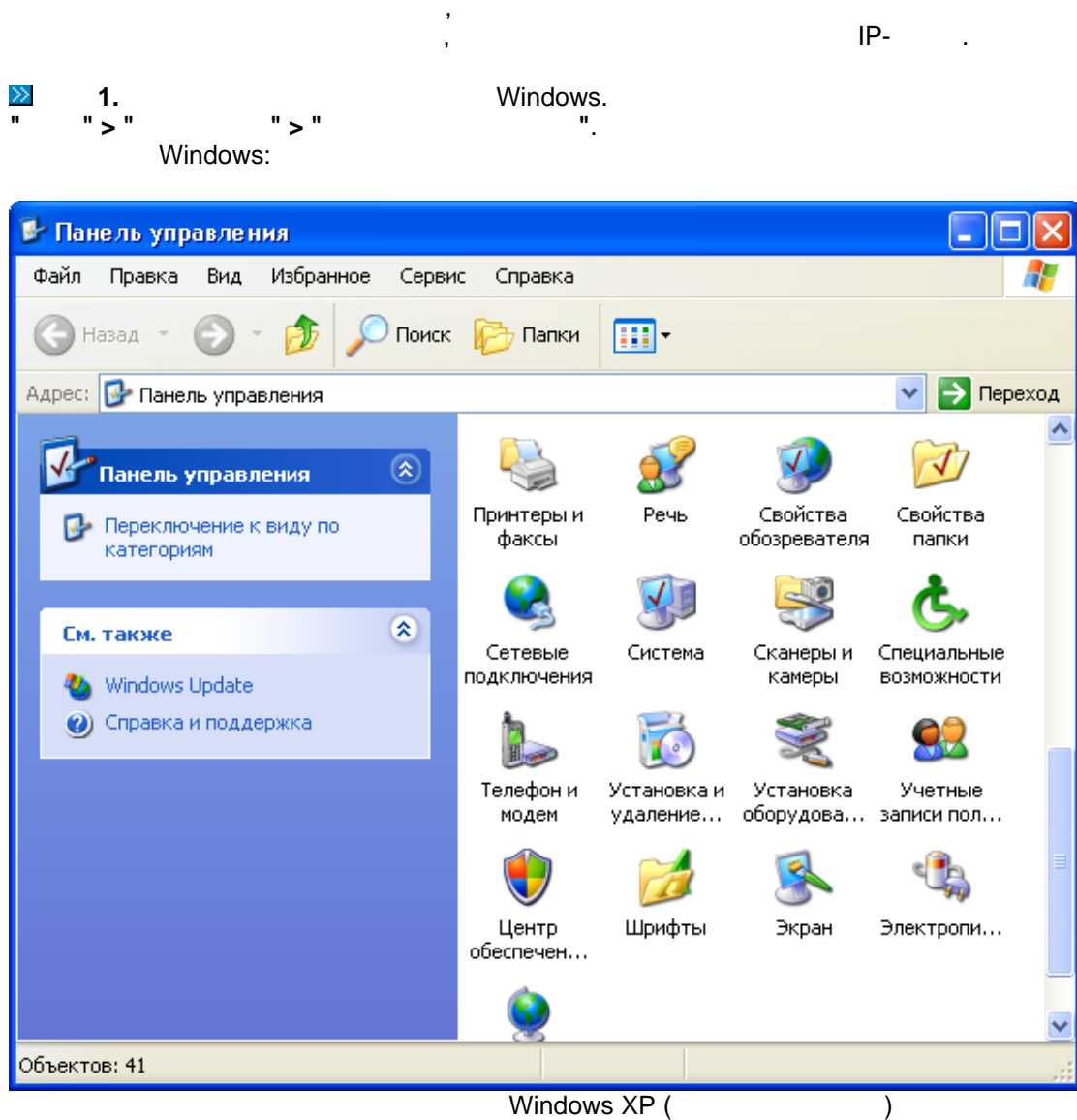


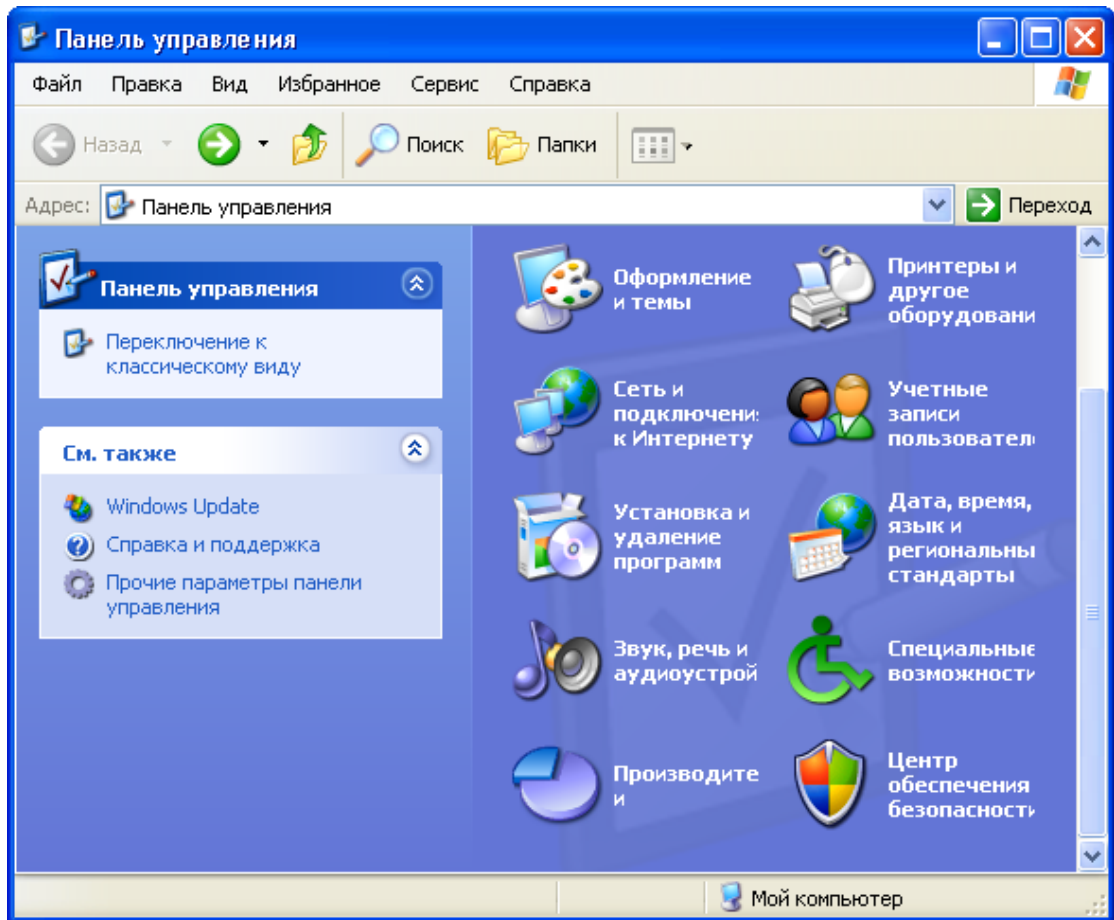
()

()

()

5.2.1.1.2



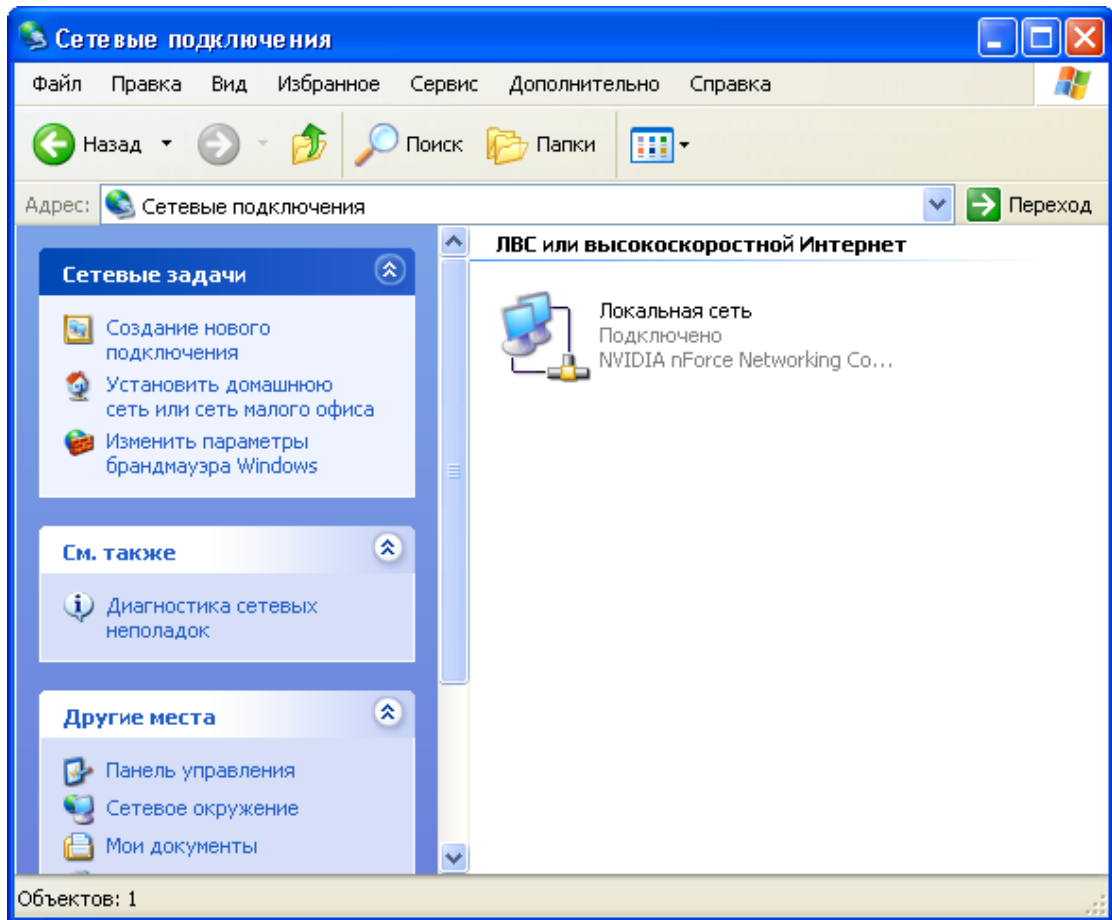


2.

"

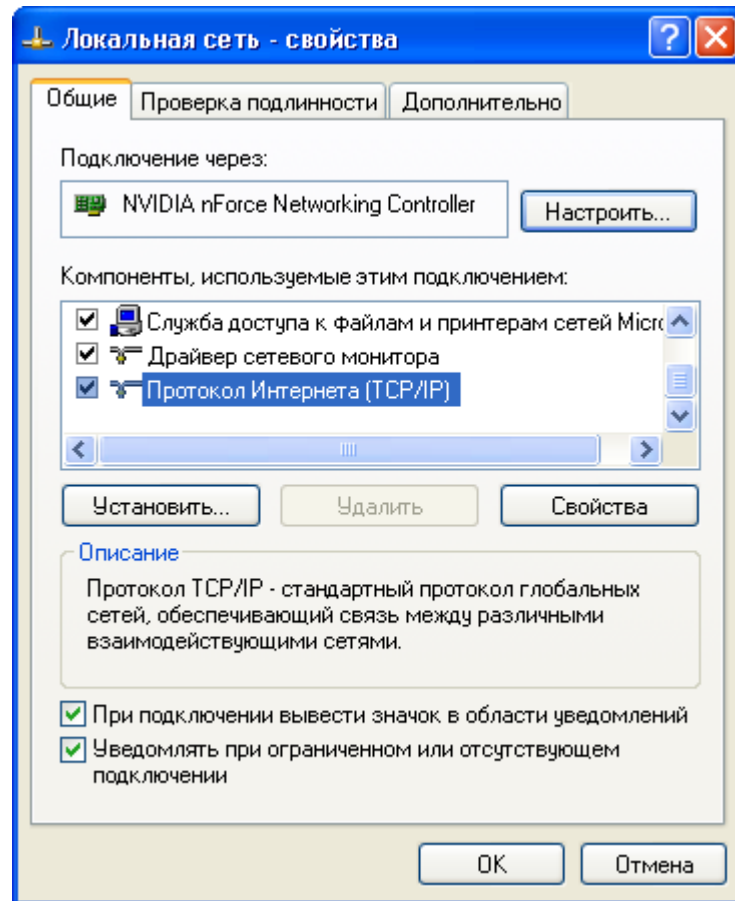
"

:



3.

4.



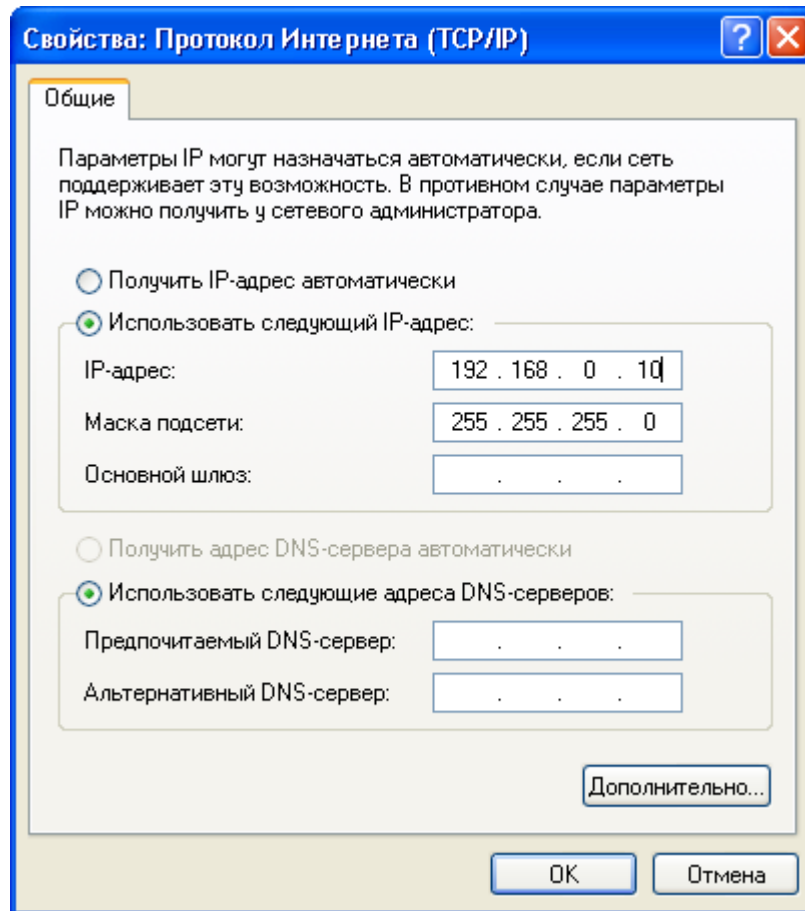
5.

"

"

(TCP/IP)"

"



6. IP-адрес: 192.168.0.10, Маска подсети: 255.255.255.0, Основной шлюз: . . .
7. "OK"
- 8.

5.2.1.2

IP-

UTP () ()

).

" "

:



IP-

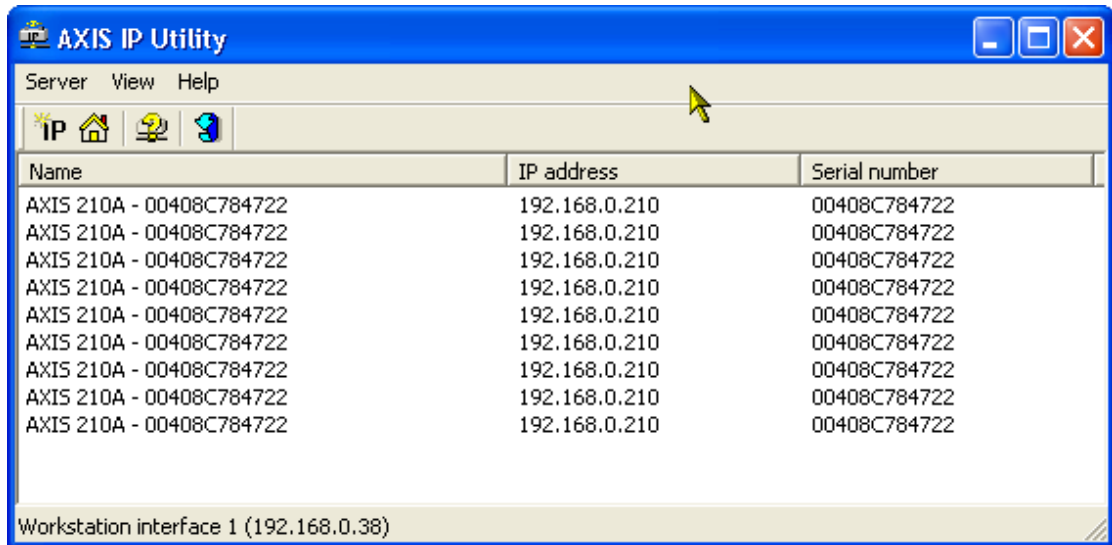
IP-

IP-

IP-

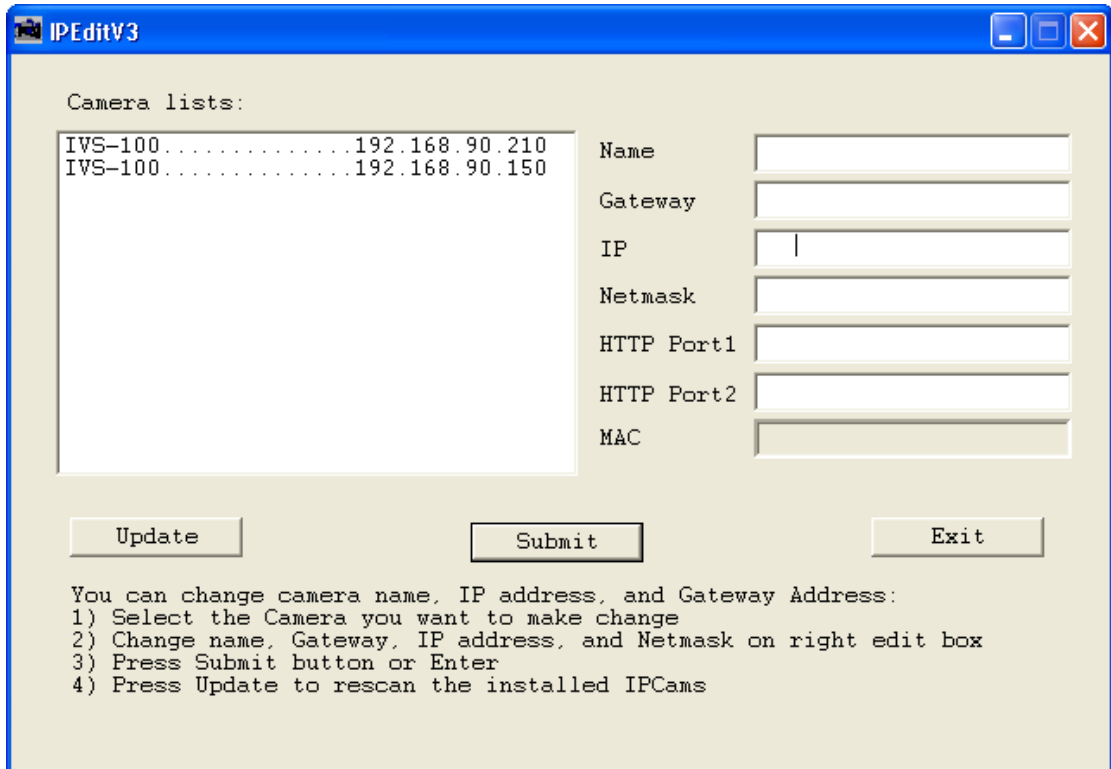
Axis

Axis IP Utility:



Planet, Aviosys

IPEdit:



IP-



1. IP

192.168.0.10,
192.168.0.11, 192.168.0.12, . . .

2.

"DigitalRing"

3.

(50 60).

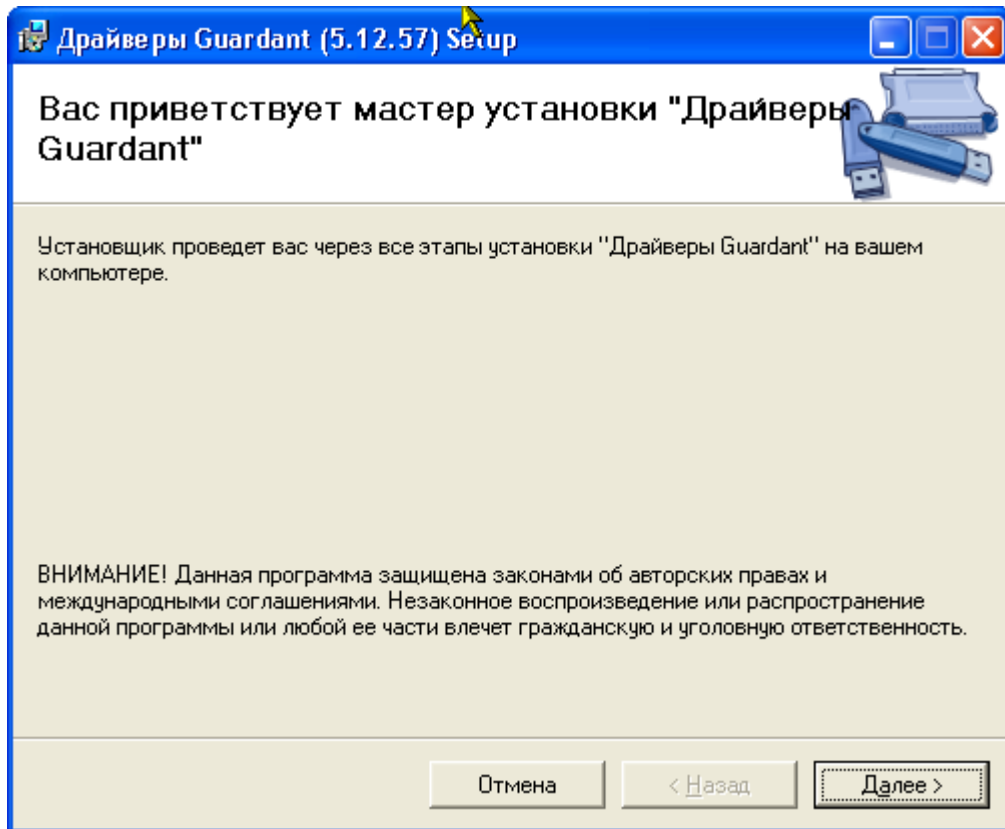
4.

MotionJPEG MPEG2/4

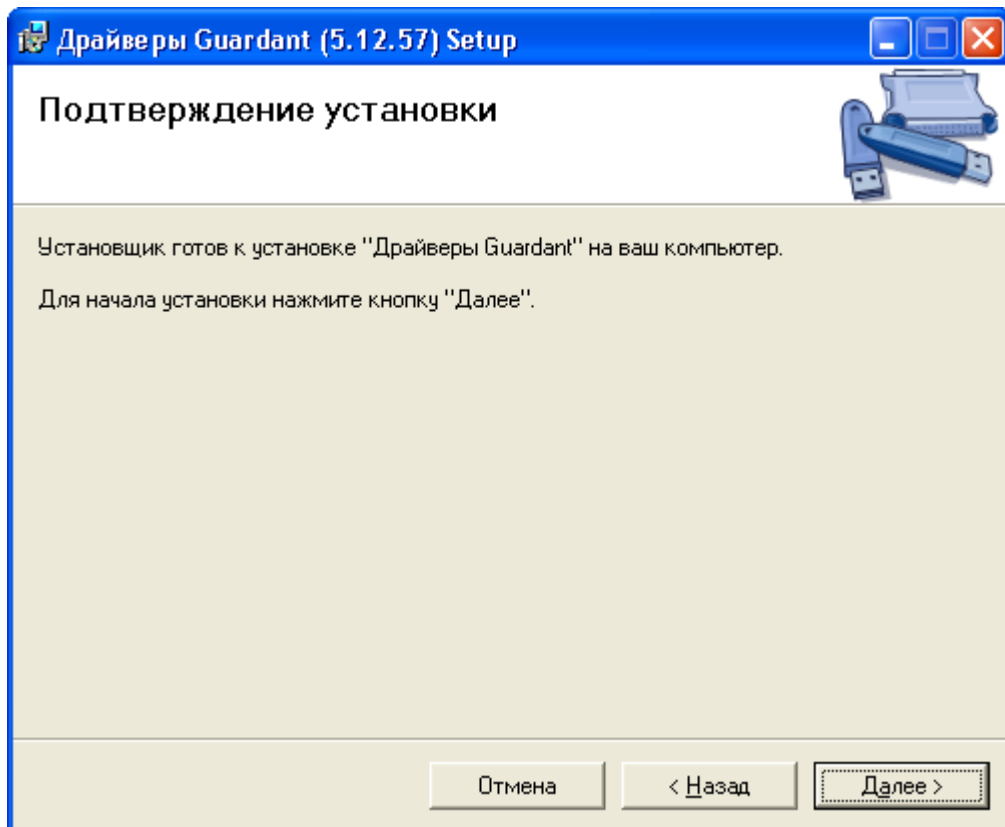
MotionJPEG JPEG.

JPEG/

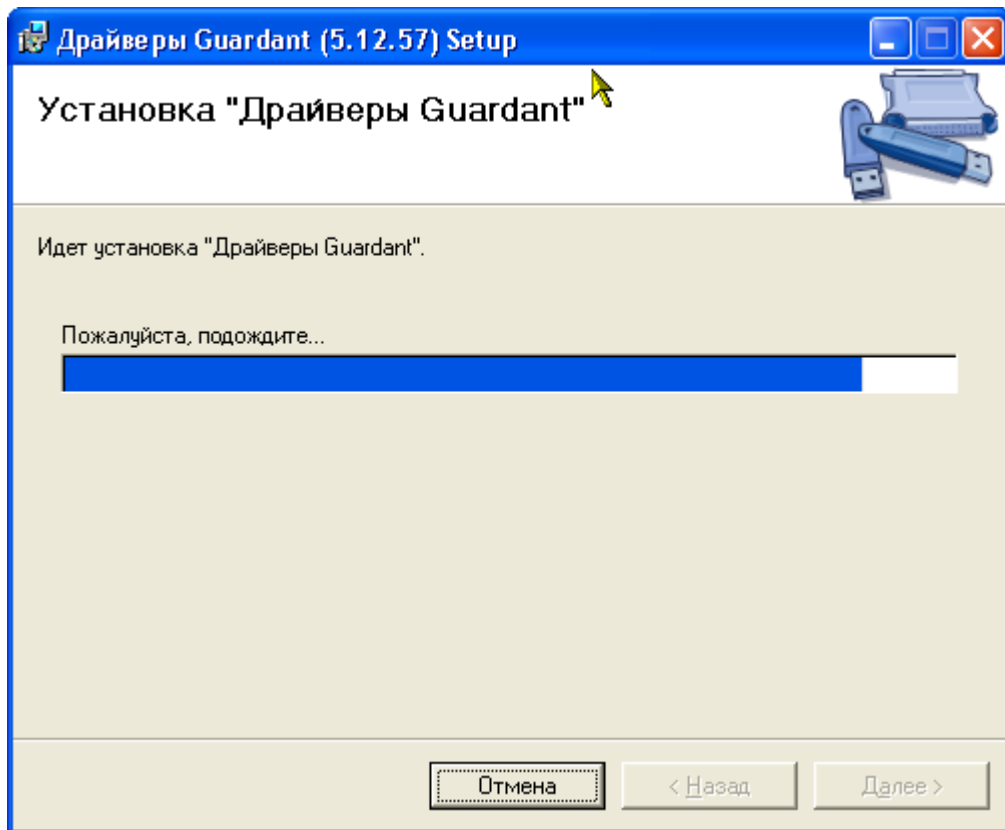
5.



6.

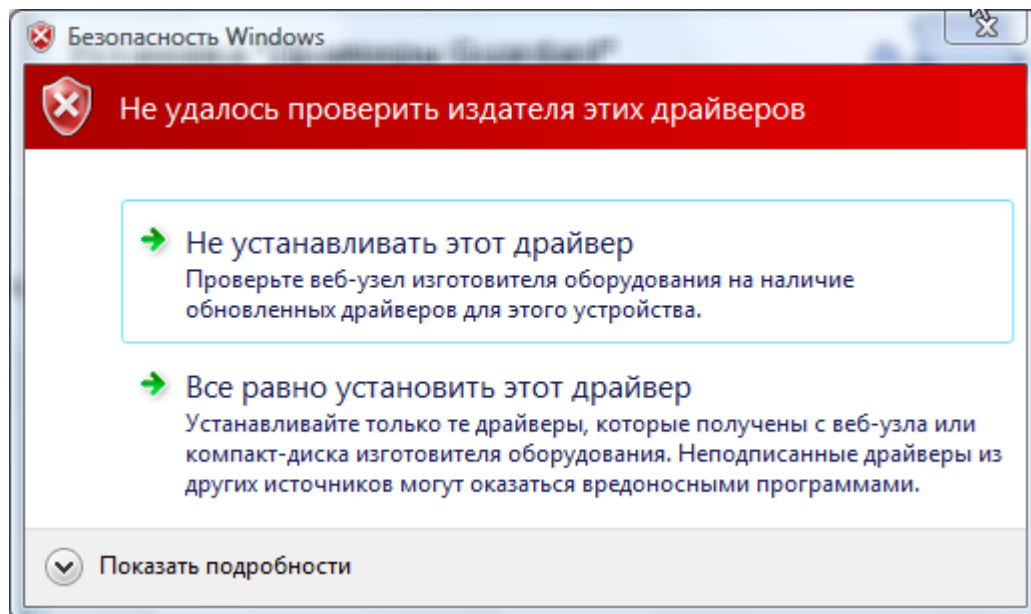


7. " " "

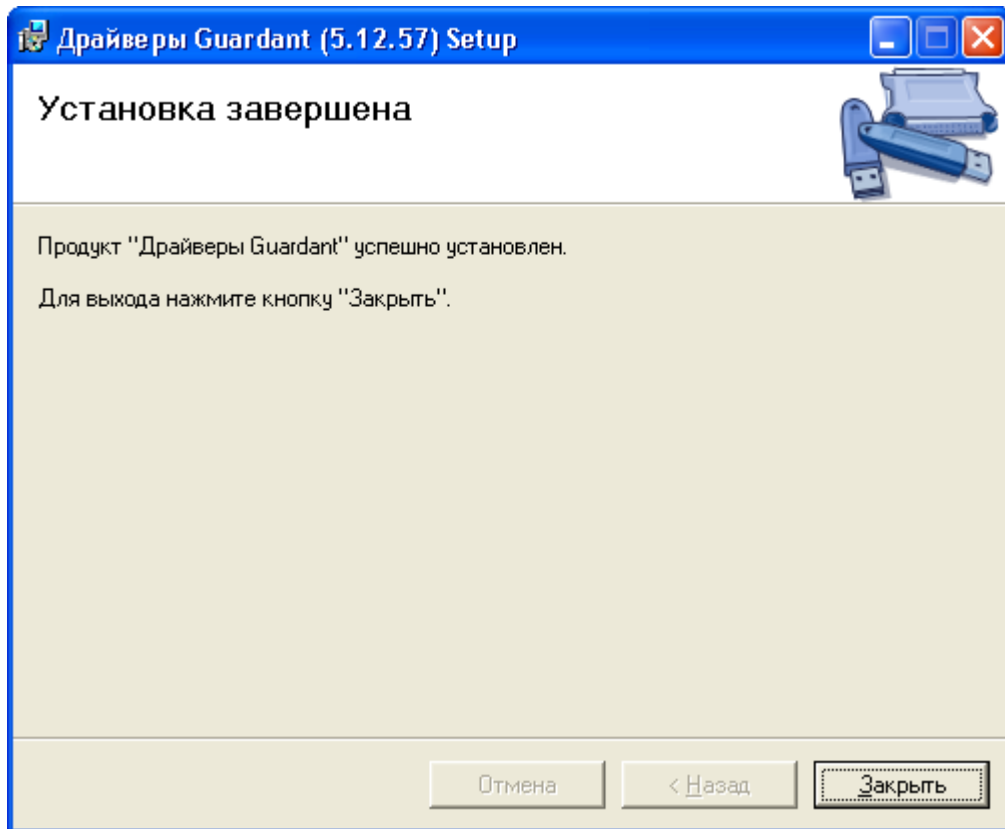


Windows Vista

" " "



8. " " "



- 9. USB

10-14

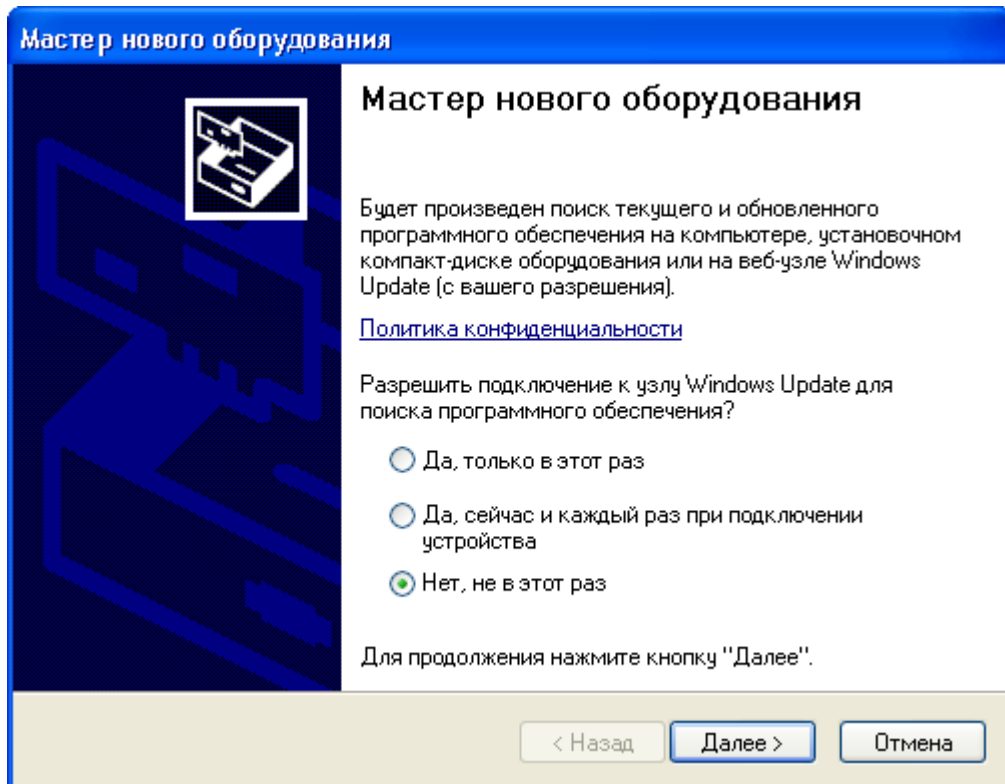
XP/2003.

USB-

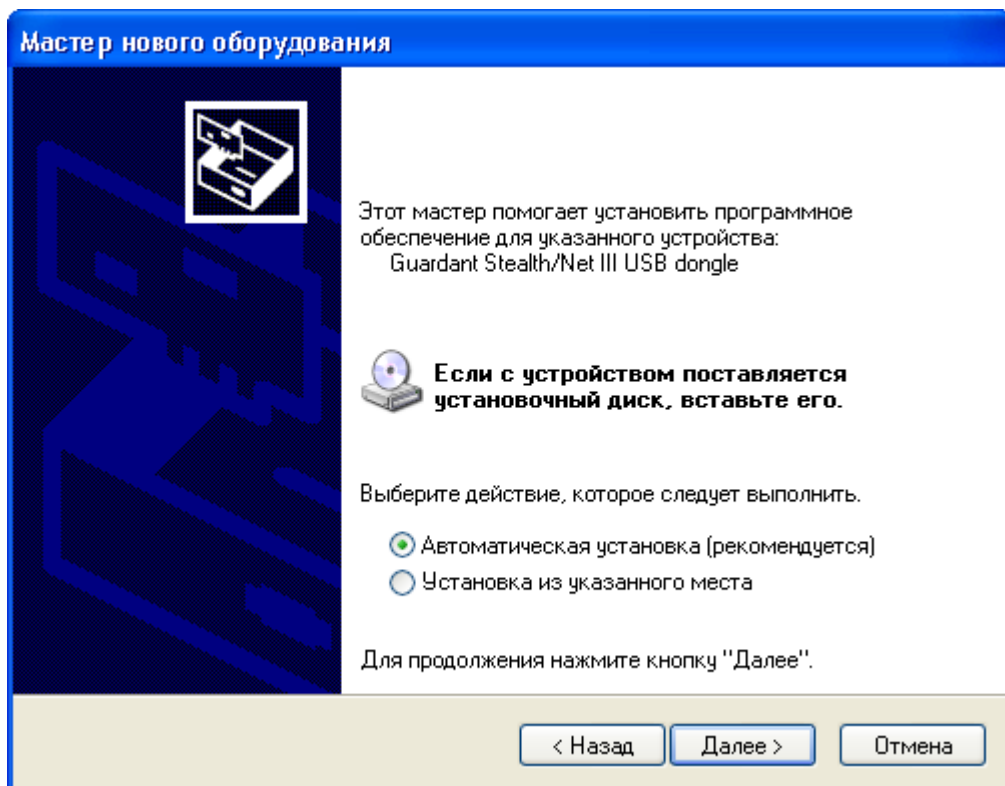
OC Windows

- 10.

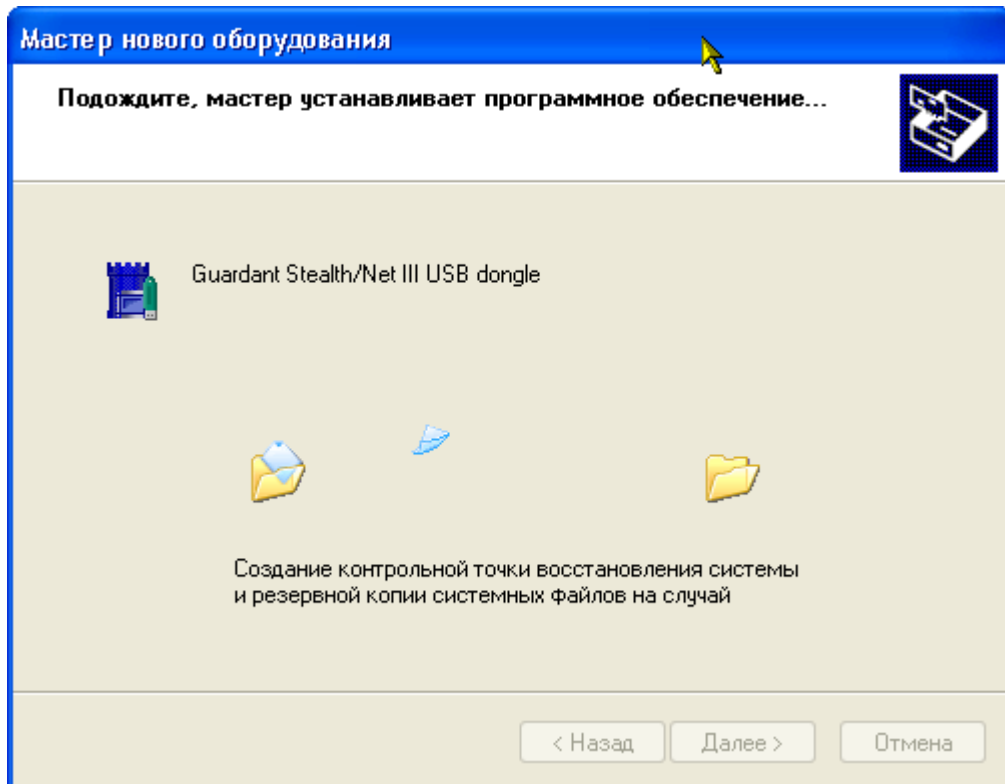
USB



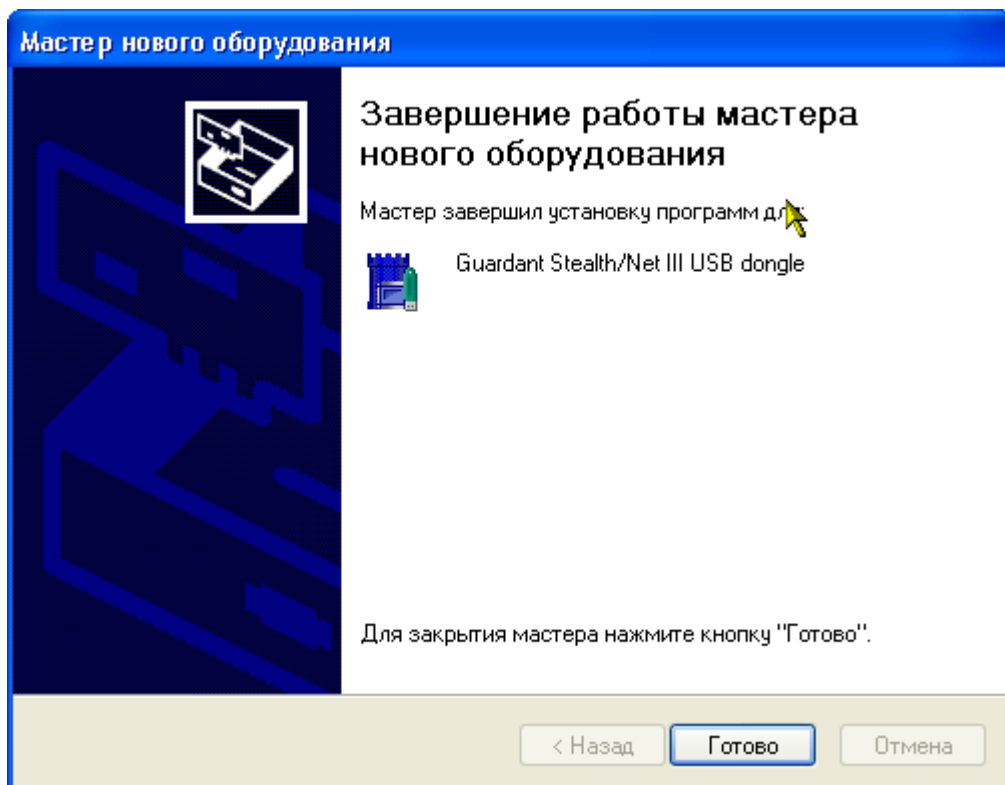
➤ . 11.



➤ . 12.



➤ . 13.



➤ . 14. , USB

Windows.

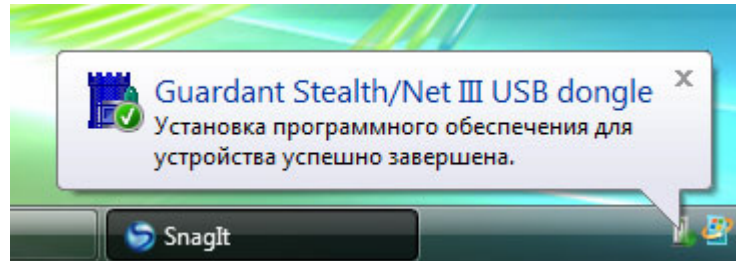
15

USB-

OC Windows VISTA.

15.

Windows Vista



USB

Windows.

5.2.2.2

Securika Monocle

1. "DigitalRing Monocle"

2.

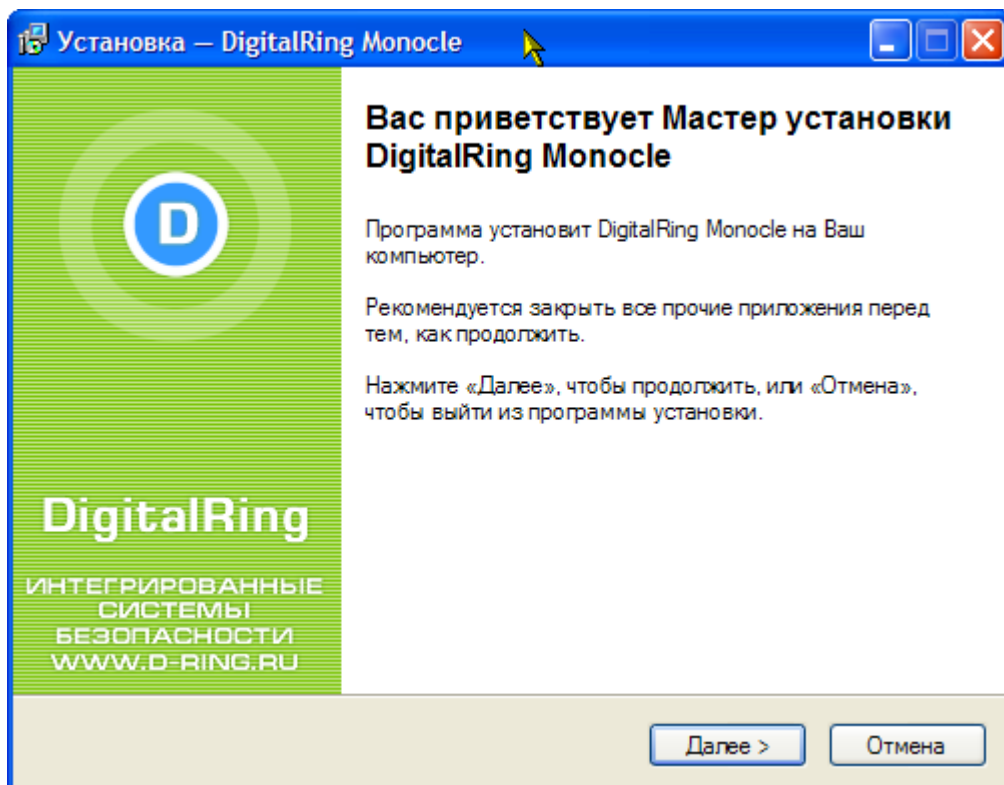
3.

autorun.exe.

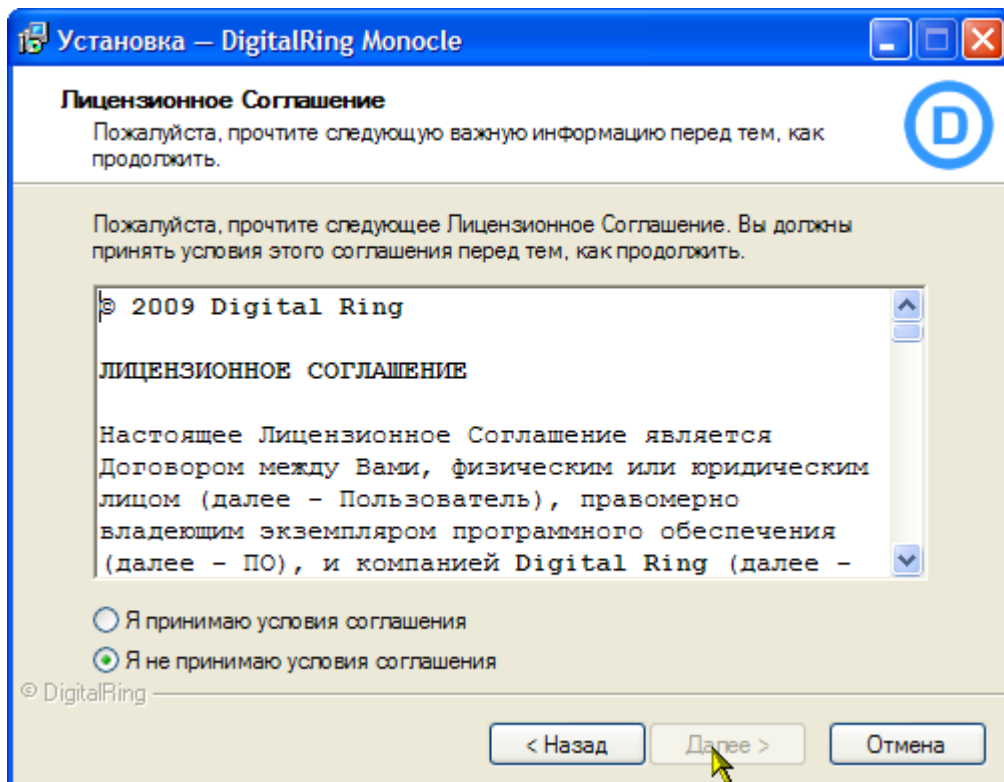
4. "Monocle".

5.

Windows Vista



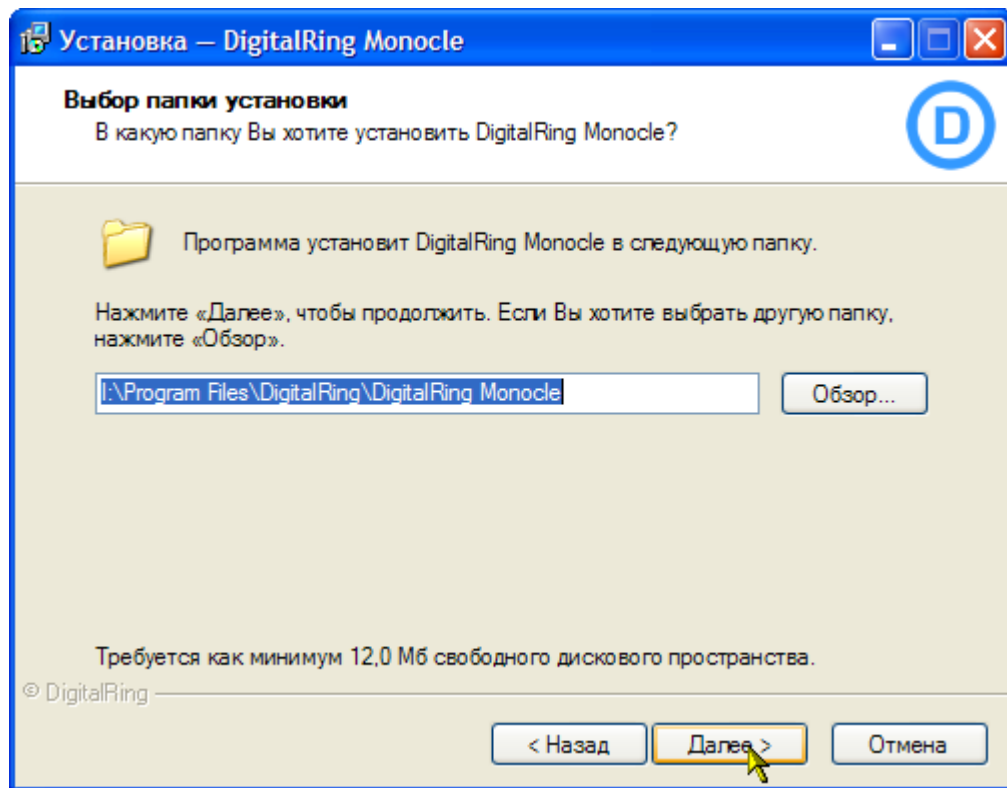
6. "DigitalRing".



- 7.

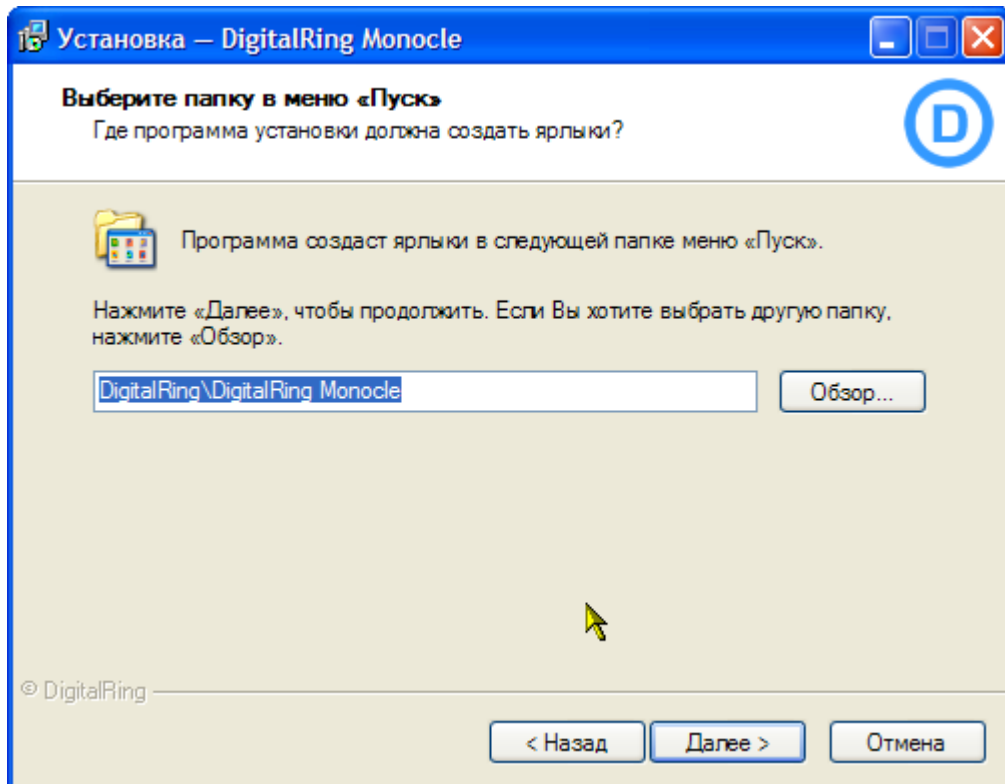
"DigitalRing".

Program Files

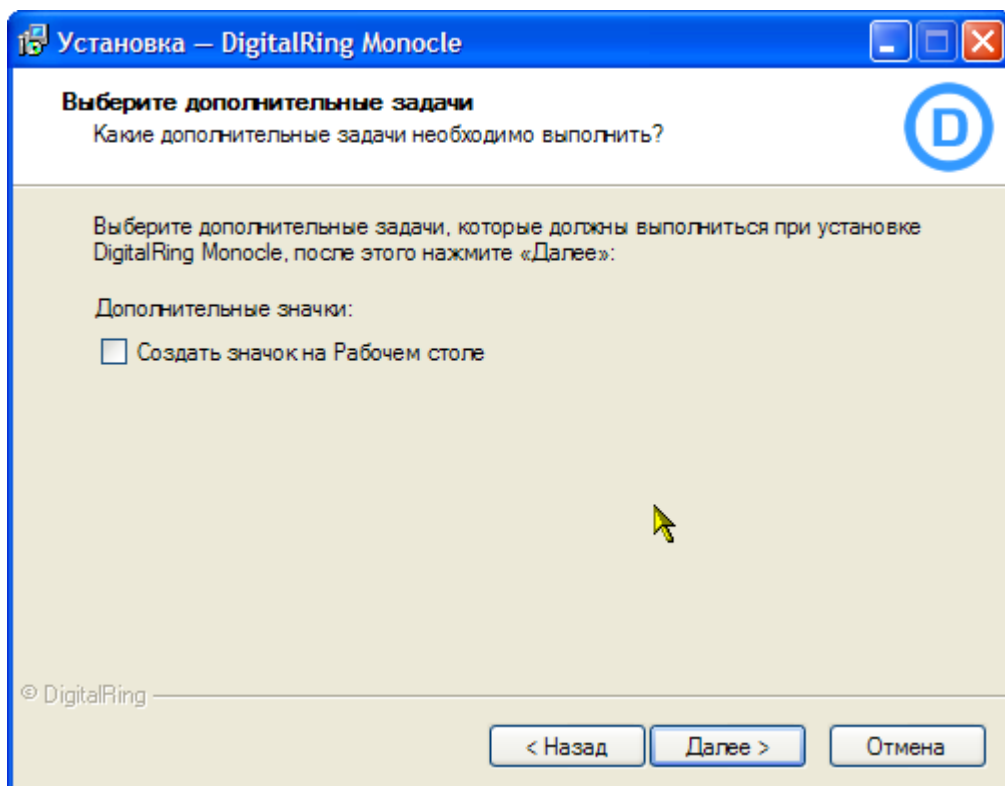


8.

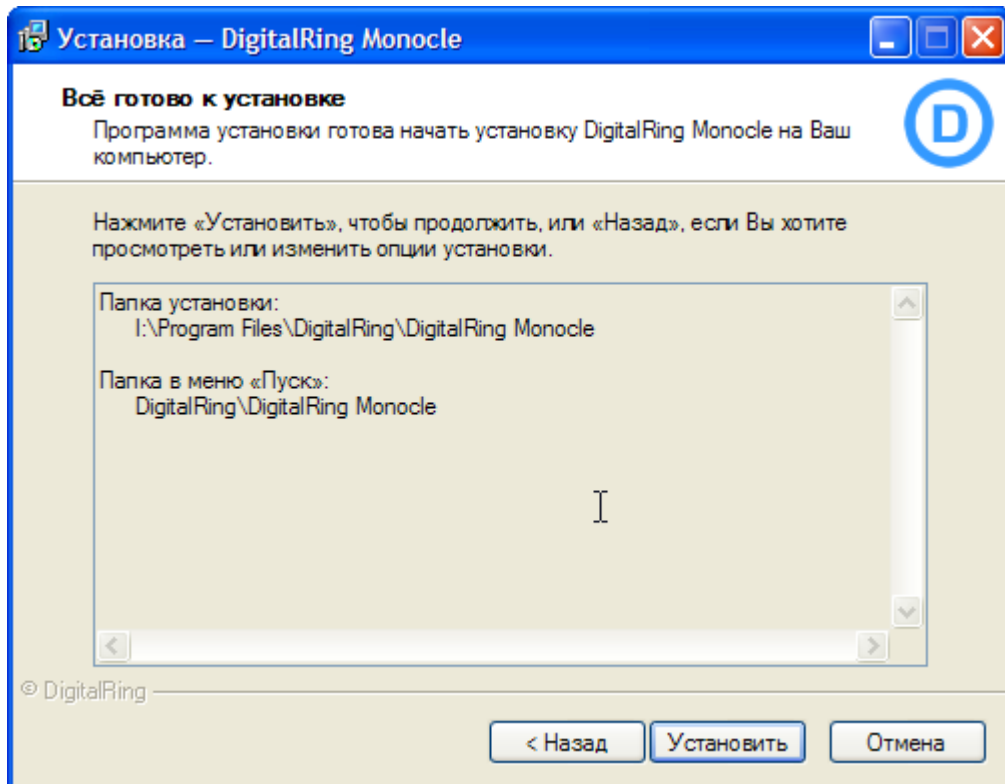
("Start" --> "All programs")



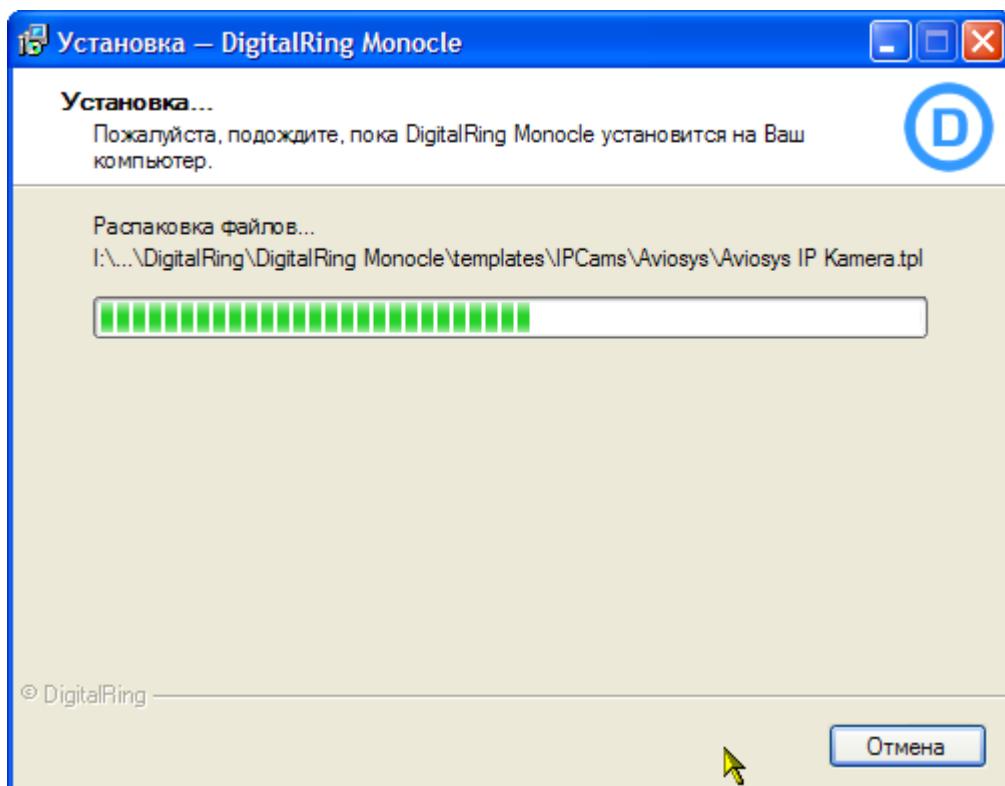
9.



10.

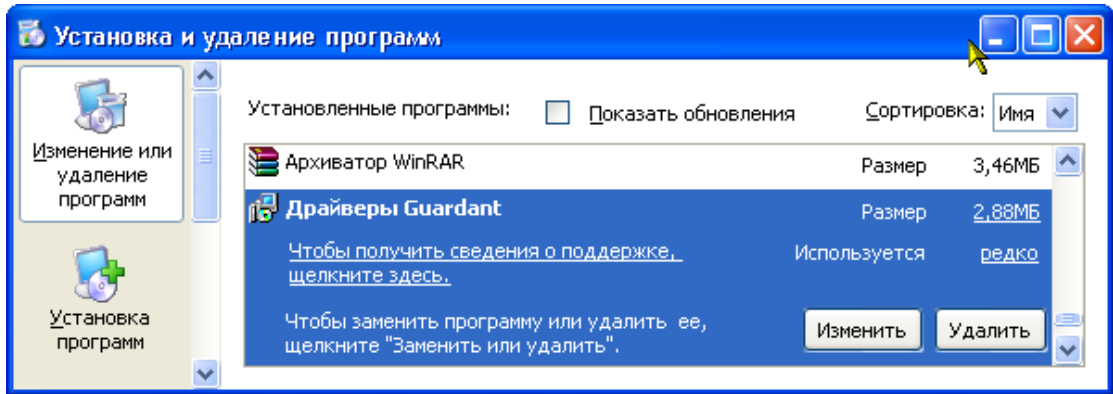


11.

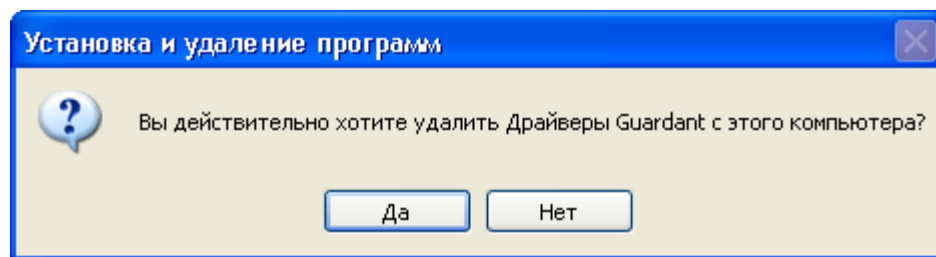


12.

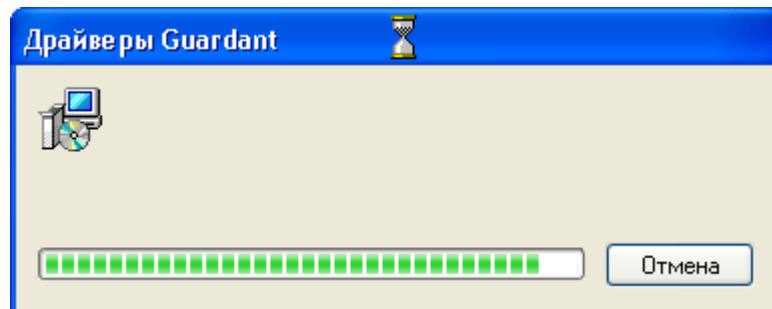
"DigitalRing
Monocle""DigitalRing
Monocle"



2. " " .



3. .



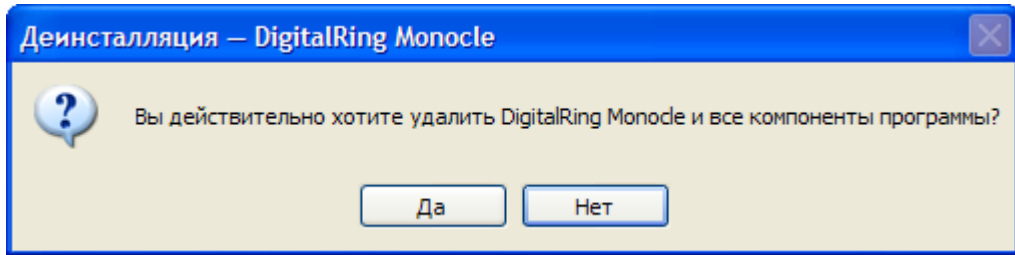
5.3.2

DigitalRing Monocle

1. "DigitalRing Monocle"
" > " > "DigitalRing" > "DigitalRing Monocle",

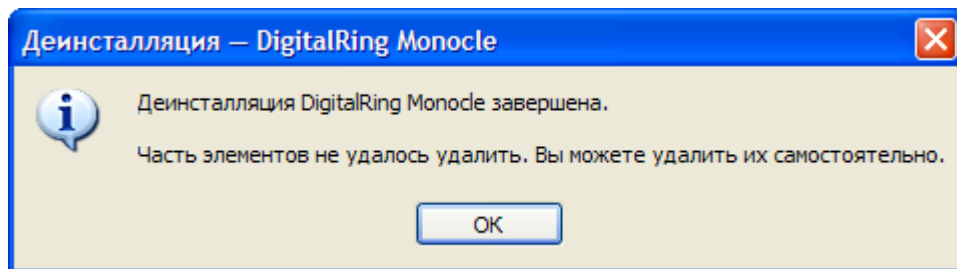
DigitalRing Monocle",

2. " "



3.

4.



5.4

DigitalRing
DigitalRing Monocle",

: www.d-ring.ru

6

DigitalRing Monocle

6.1

Monocle

"DigitalRing Monocle"
Windows.



DigitalRing Monocle:

"DigitalRing Monocle" (Start) >
" (All Programs) > "DigitalRing" > DigitalRing Monocle.

Добавление камеры

Добавление новой IP камеры

Выберите модель камеры и укажите параметры подключения

1 Выберите модель камеры

Имя камеры: Новая камера (4) 2

IP адрес камеры или имя узла: 192.168.0.20 3 Порт: 80 4

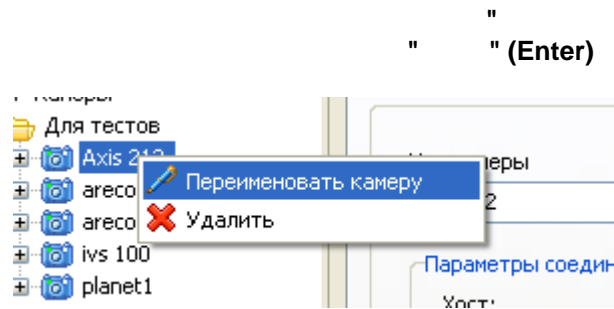
Путь: 6

Имя пользователя: admin 7 Пароль: 8

9 OK 10 Отмена

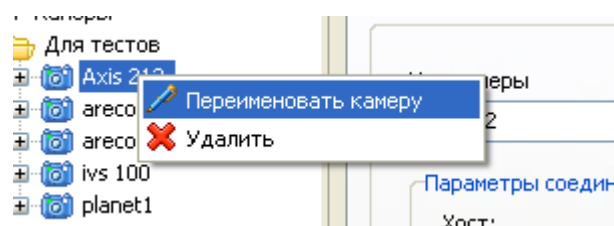
- 2. " " (2).
- 3. IP- (1). (5)
- 4. IP- (3). IP- mycamera12345.ru. http:// , www. !.
- 5. (4). 80. 88, 81, 8088, 8080, 8081.
- 6. (7) (8)
- 7. (6).
- 8. "OK" (9) " (10)

6.2.1.2



" " (Enter)

6.2.1.3



"Delete"

6.2.1.4

6.2.1.4.1

Соединение Вид PTZ Выходы Предустановки Прочее Запись

Имя камеры
Axis 212 (1)

Параметры соединения

Хост: 192.168.222.106 (2) Порт: 80 (3) URI: /axis-cgi/mjpg/video.cgi (4) HTTP: 1.0 (5)

Пауза между кадрами: 5 мсек (< 200 fps) (6)

(7) Отбрасывать лишние кадры (8) Использовать HTTP авторизацию:

Таймаут (мсек): 10000 (9) Режим: Обычный (10) Пользователь: root (11) Пароль: **** (12)

HTTP прокси-сервер

(13) Использовать Proxu-сервер (14) Использовать Proxu авторизацию

Хост Proxu: 127.0.0.1 (15) Порт Proxu: 3128 (16) Proxu пользователь: proxyuser (17) Proxu Пароль: (18)

- » (1) - Имя камеры
- » (2) - IP-адрес камеры, например, www.mycamera12345.ru. http://www.mycamera12345.ru
- » (3) - Порт Web-камеры. Обычно 80. Возможные значения: 88, 81, 8088, 8080, 8081.
- » URI (4) - Адрес видео-сервиса камеры. Например, для Axis241Q: /axis-cgi/mjpg/video.cgi?camera=1.
- » HTTP (5) - Версия протокола. Возможные значения: 1.0, 1.1.
- » (6) - Пауза между кадрами (1/1000 секунды).

5 10000 , 0.1 FPS.

10. , 100

7 FPS (

WEB-) , (5).

IP- Axis

: /axis-cgi/mjpg/video.cgi?fps=7.

(

30 (7) - 100

23 7 " 30

30 30

" 100 (6)

(MotionJPEG), -

"

HTTP (8) -

(11) (12) Basic HTTP-

(9) -

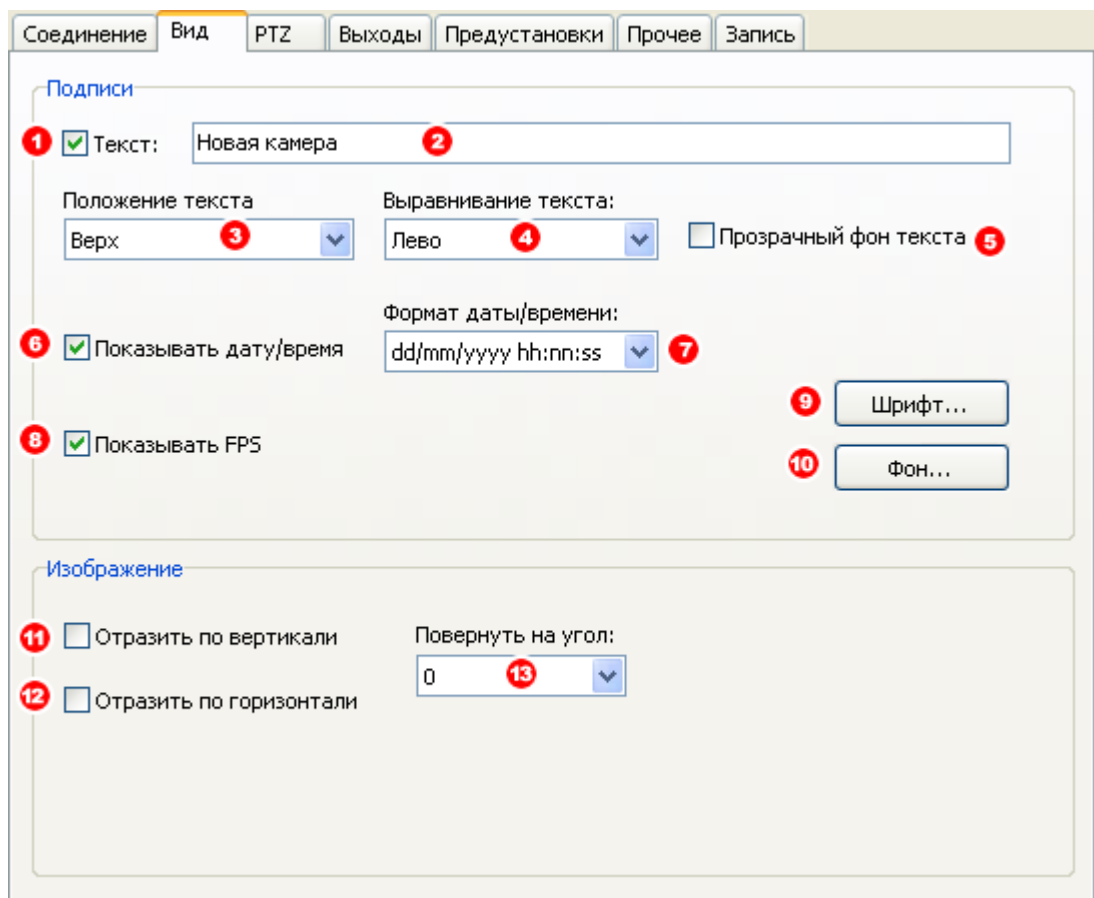
(10) - " HTTP-

" "

(11) -

- » (12) -
- » Proxy- (13) -
- » Proxy (15) - IP-
- » Proxy (16) - (, 3128 8080).
- » Proxy (14) -
Basic Proxy-
- » Proxy (17) -
- » Proxy (18) -
" "

6.2.1.4.2



- (1) - (2).
- ():
- {HOST} - IP- ;
 - {PORT} - ;
 - {FPS} - ;
 - {DATE} - ;
 - {TIME} - ;
 - {NOW} - ;
 - {FRAMESIZE} - ;
 - {MOTIONTIME} - , ;
 - {LASTMOTIONTIME} - ;
 - {USERNAME} - ;
 - {PASSWORD} - ;
 - {PATH} - ;
 - {FRAMELEN} - ;
 - {MODE} - (JPEG/MotionJPEG/)
 - {FRAMESCOUNT} - ;
 - {TRAF} - ;
 - {MOTION} - ;
 - {LASTERR} - ;
- (3) - (/)).
- (4) - (/ /).
- (5) -
- (6) - /
- (7) - /
- FPS (8) -

HTTP

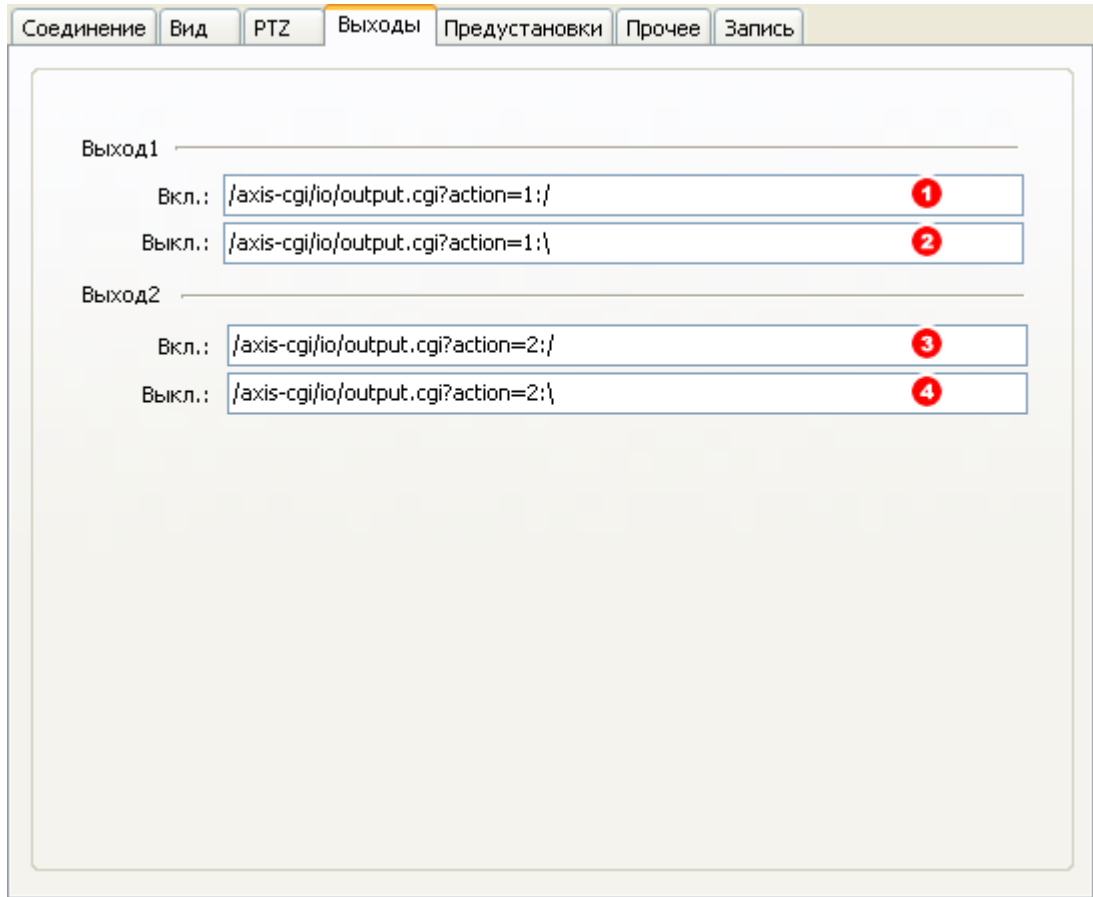
DigitalRing Monocle,

- ▶ (1) -
- ▶ (2) -
- ▶ (3) -
- ▶ (4) -
- ▶ (5) - (ZOOM IN, ZOOM TELE)
- ▶ (6) - (ZOOM OUT, ZOOM WIDE)
- ▶ XY (7) - X, Y
- ▶ (8) -
- ▶ (9) - HTTP- IP- (IP- , Planet ICA-100) HTTP GET HTTP POST

GET, . . .
"?" "&".
Axis: /axis-cgi/com/ptz.cgi?camera=1&move=left -
1 .
POST- GET-
PTZ- (10) -
IP- (11) -
C Z).
Windows.
" "

6.2.1.4.4

IP-
HTTP
1-2
:
":



DigitalRing Monocle

HTTP

▶	1	(1) -	1.
▶	1	(2) -	1.
▶	2	(3) -	2.
▶	2	(4) -	2.
	"	"	

6.2.1.4.5

(PTZ),
(Presets) -

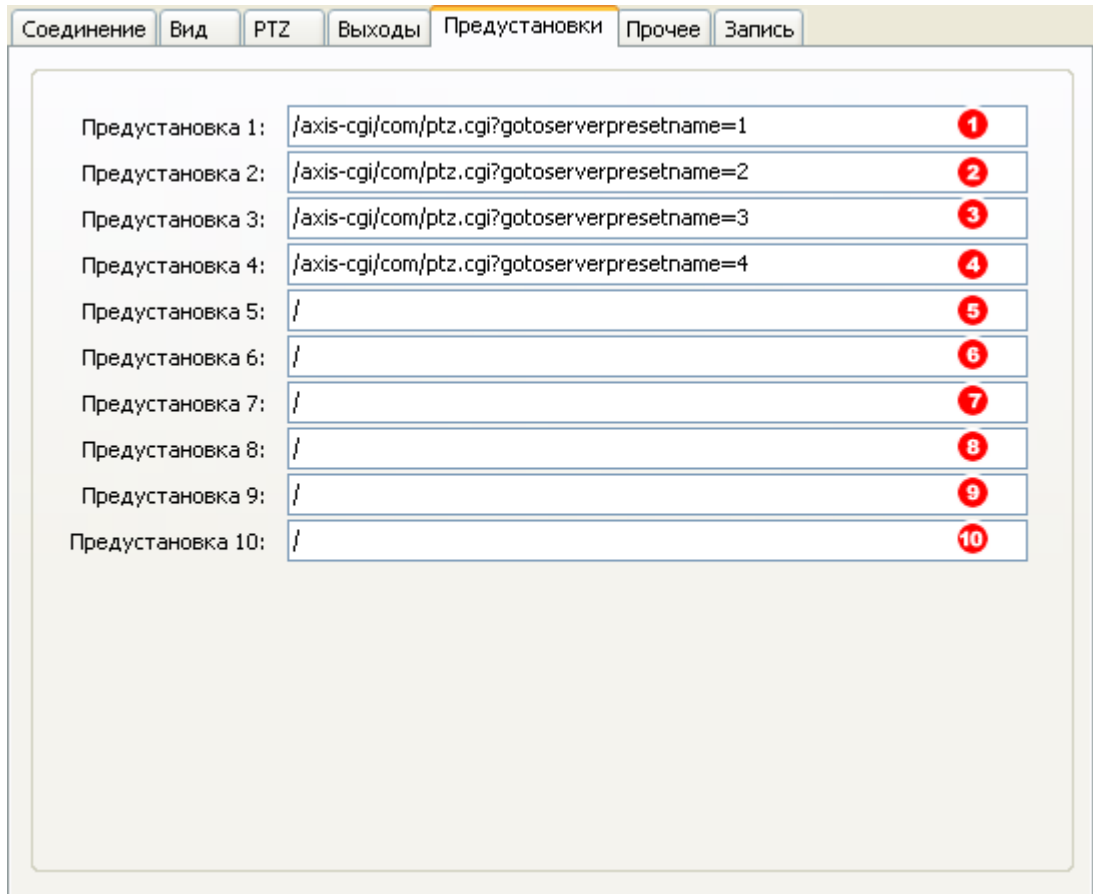
DigitalRing Monocle

HTTP

10

Web-

HTTP



Axis.

1,2,3,4.

- ▶ **1 (1)** -
- ▶ 1 ()
- ▶ **2 (2)** -
- ▶ 2 ()
- ▶ **3 (3)** -
- ▶ 3 ()
- ▶ **4 (4)** -
- ▶ 4 ()
- ▶ **5 (5)** -
- ▶ 5 ()

6 (6) -

7 (7) -

8 (8) -

9 (9) -

10 (10) -

" "

6.2.1.4.6 (/)

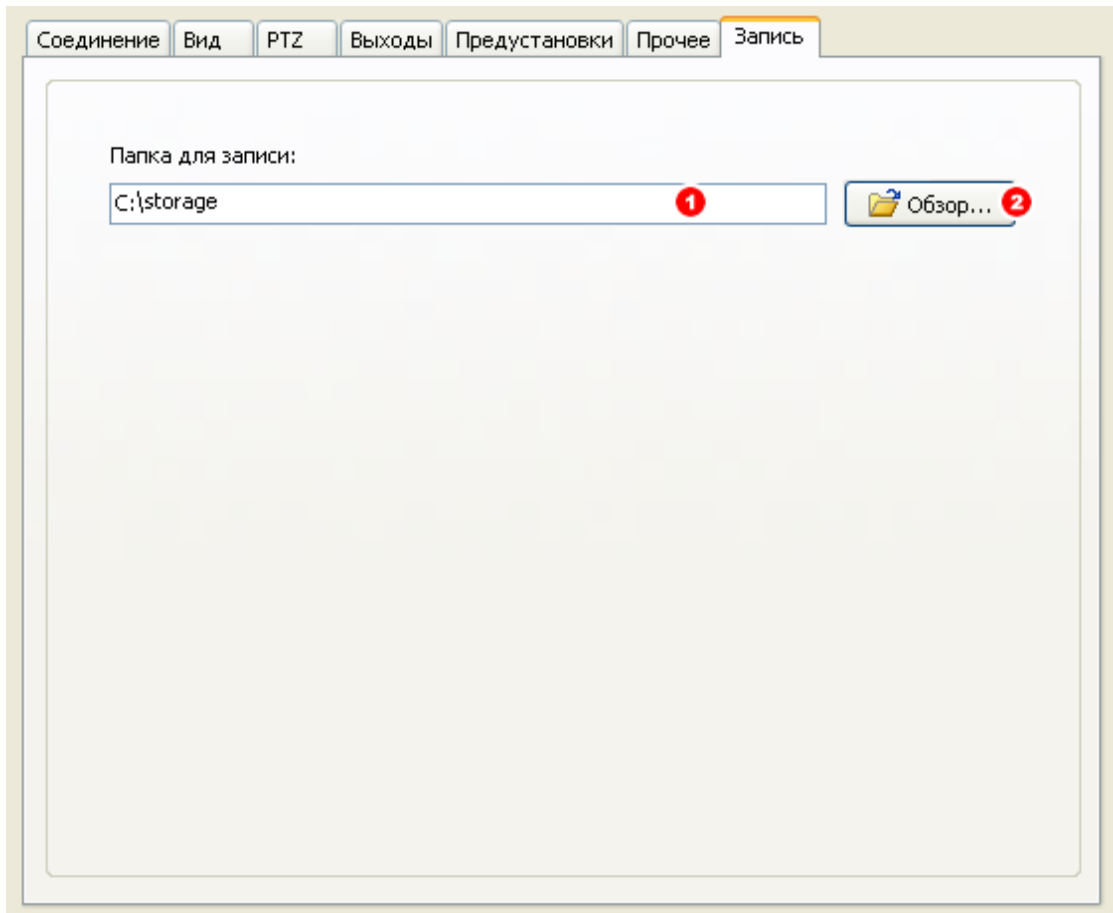
Соединение	Вид	PTZ	Выходы	Предустановки	Прочее	Запись
Фокус						
Ближе:	<input type="text" value="/axis-cgi/com/ptz.cgi?rfocus=2500"/>					1
Дальше:	<input type="text" value="/axis-cgi/com/ptz.cgi?rfocus=-2500"/>					2
Авто:	<input type="text" value="/axis-cgi/com/ptz.cgi?autofocus=on"/>					3
Диафрагма						
Больше:	<input type="text" value="/axis-cgi/com/ptz.cgi?riris=250"/>					4
Меньше:	<input type="text" value="/axis-cgi/com/ptz.cgi?riris=-250"/>					5
Авто:	<input type="text" value="/axis-cgi/com/ptz.cgi?autoiris=on"/>					6
Режим						
День:	<input type="text" value="/axis-cgi/com/ptz.cgi?ircutfilter=on"/>					7
Ночь:	<input type="text" value="/axis-cgi/com/ptz.cgi?ircutfilter=off"/>					8
Авто:	<input type="text" value="/axis-cgi/com/ptz.cgi?ircutfilter=auto"/>					9
Перезагрузка:						
	<input type="text" value="/axis-cgi/admin/restart.cgi"/>					10

().

- ▶ (1) - .
- ▶ (2) - .
- ▶ (3) - (AUTOFOCUS).
- ▶ (4) - ().
- ▶ (5) - ().
- ▶ (6) - (AUTOIRIS).
- ▶ (7) - .
- ▶ (8) - .
- ▶ (9) - / .
- ▶ (10) - .
" "

6.2.1.4.7

": . "



DigitalRing Monocle

DigitalRing Monocle

60

Keepmaster.



(1) -

... (2).

" " "

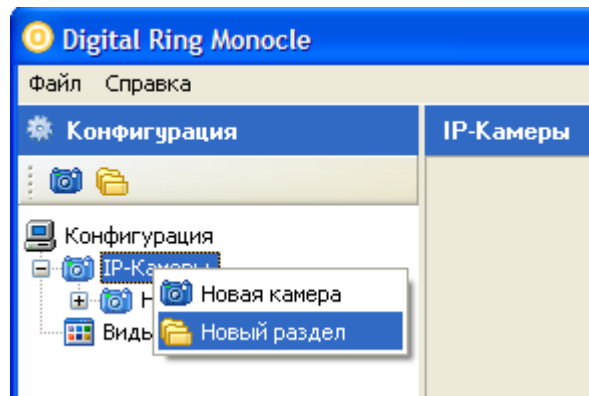
6.2.2

"DigitalRing Monocle".

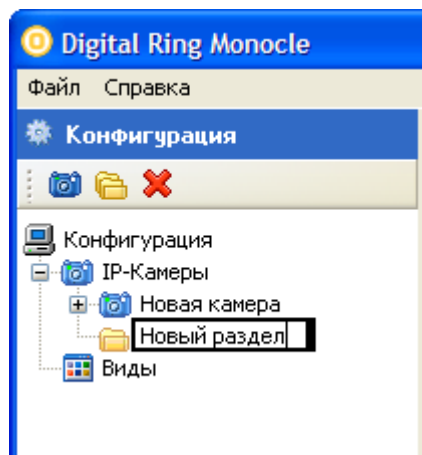
"DigitalRing Monocle"

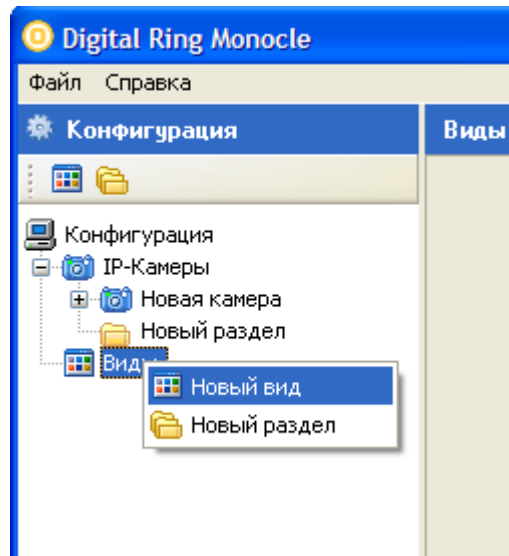
6.2.2.1

"IP- (" , ") "



6.2.2.2





6.2.3.1

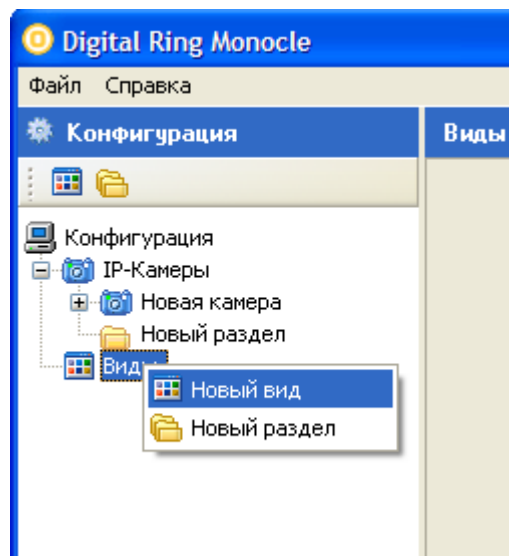
"
"

"

",

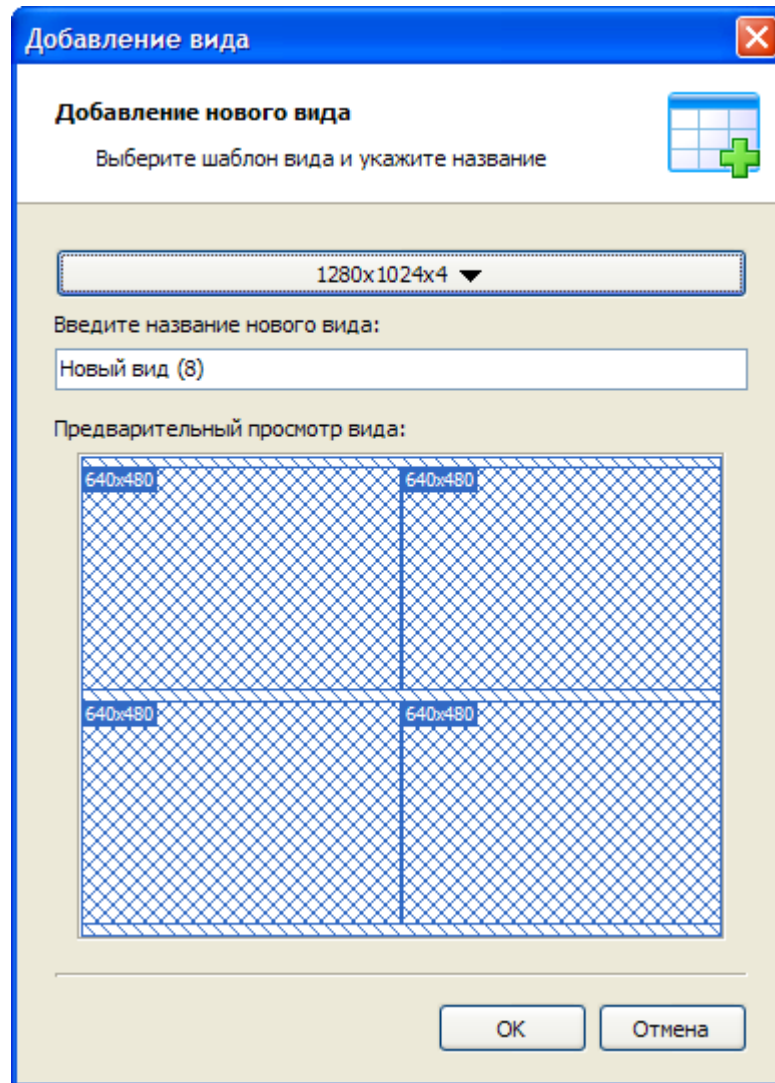
"

"



"

":

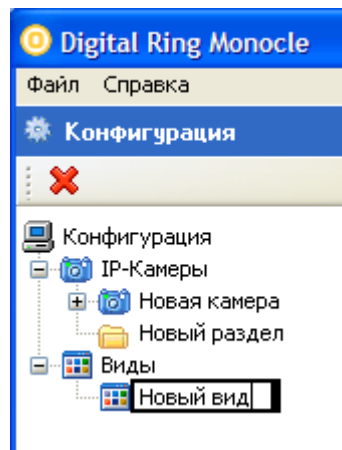
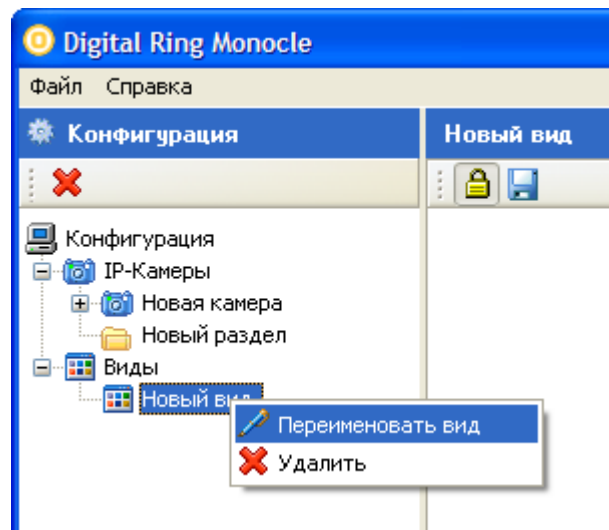


"OK"

"

"

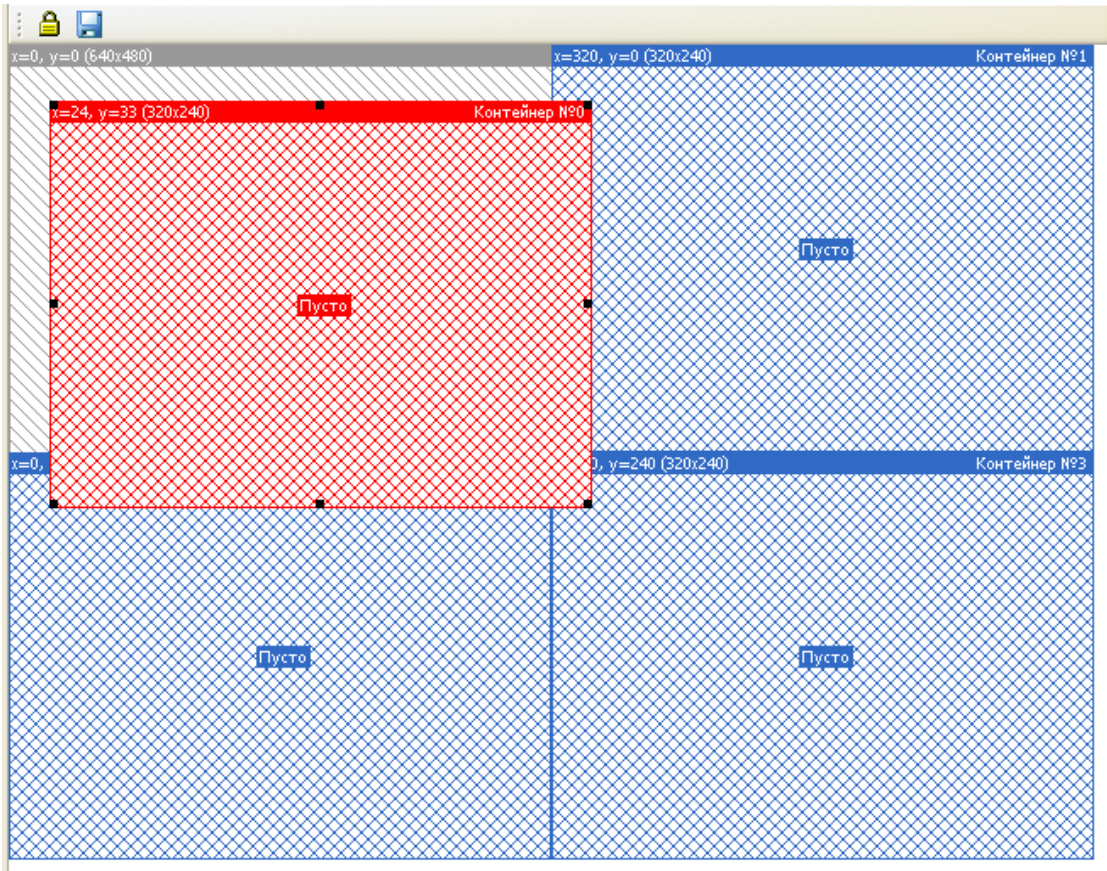
6.2.3.2



6.2.3.3

6.2.3.3.1

():



()

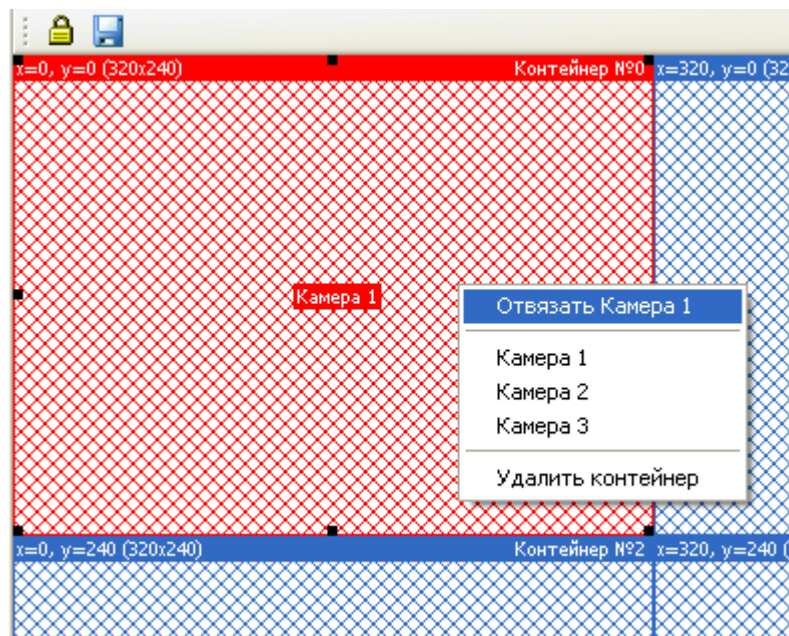
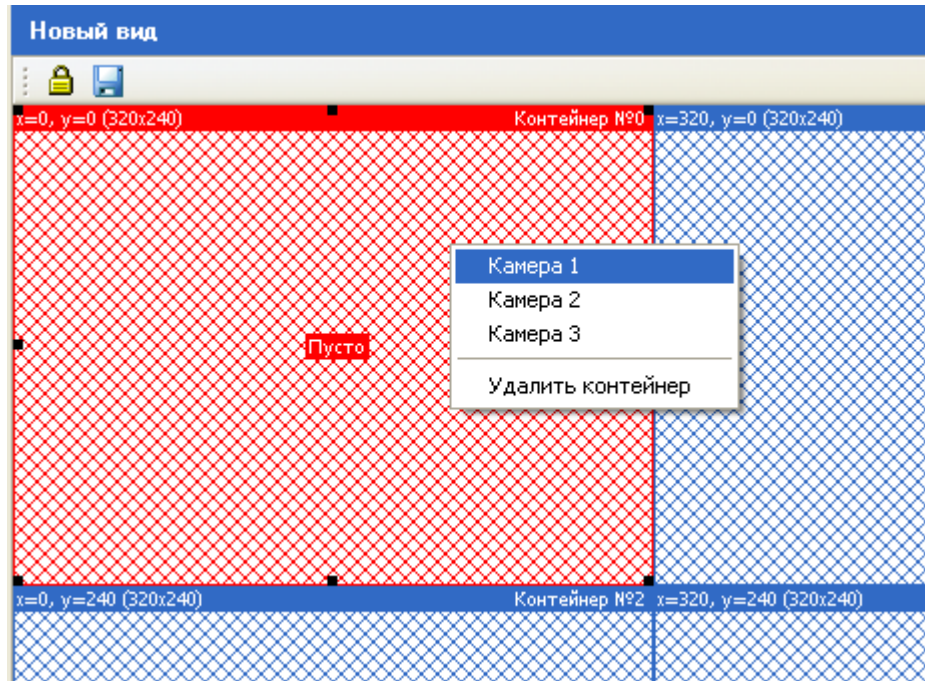
),

(

Ctrl +

, Shift +

6.2.3.3.2



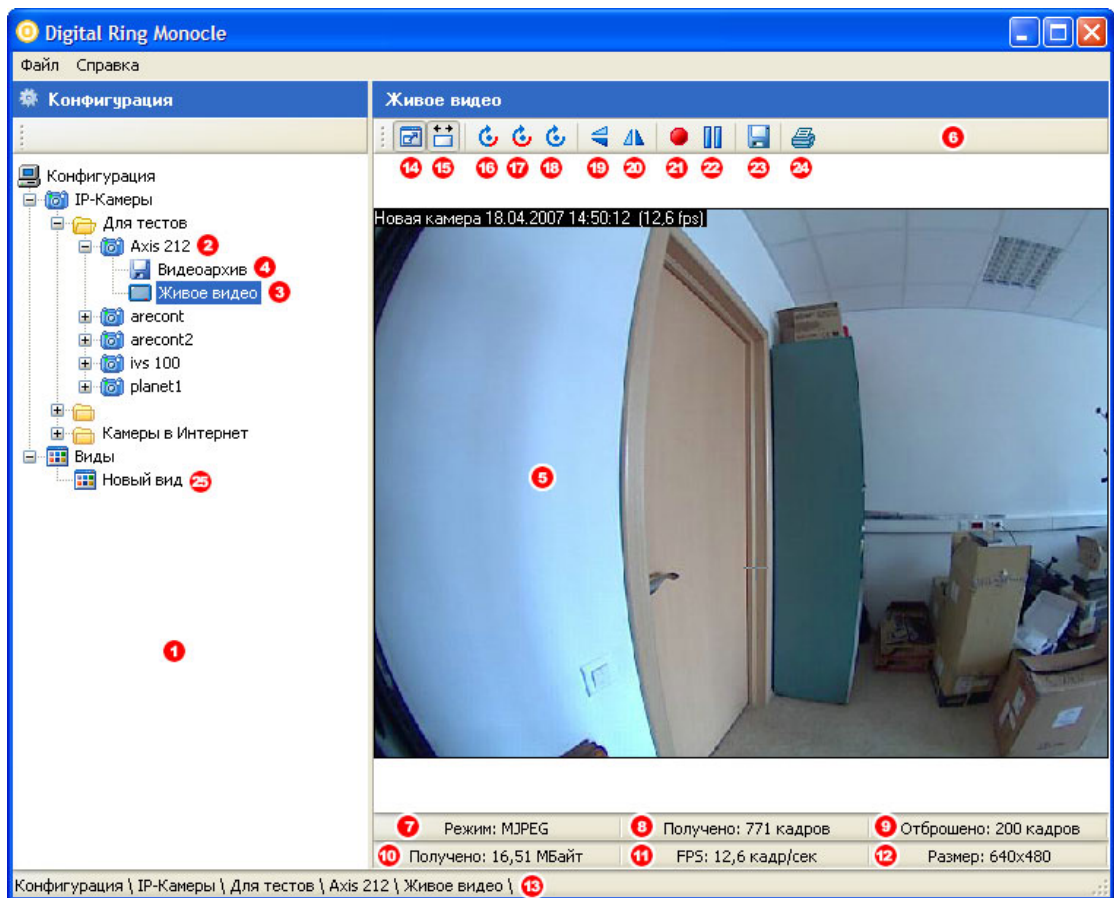
7

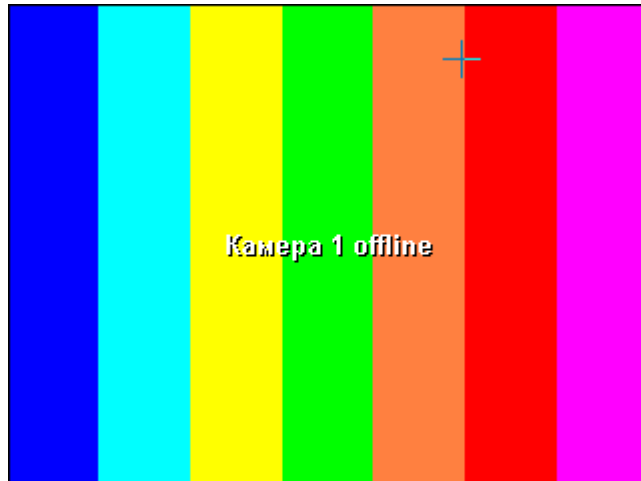
DigitalRing Monocle

"DigitalRing Monocle".

7.1

(2) ((1)) (3) +
 " (4). " " (3) "
 "DigitalRing Monocle" :





()

:



()

(6)

:

(14) -

;

(15) -

;

(16) -

90

;

(17) -

180

;

(18) -

270

;

(19) -

;

(20) -

;

(21) -

/

;

2.

- CTRL + - ;
- CTRL + - ;
- CTRL + - ;
- CTRL + - ;
- CTRL + HOME - ;

3.



(3)-(7)

- (3) - ;
- (7) - ;
- (4) - ;
- (6) - ;
- (5) - - ;

1.

" , " " " ,

2.

- CTRL + - ;

- CTRL + ;

3.

(1),(2) / :

- (1) - ;

- (2) - ;

. IP- 2

DigitalRing"

1.

- CTRL + Alt + F1 - 1;
- CTRL + Alt + F2 - 2;
- CTRL + Alt + F3 - 1;
- CTRL + Alt + F4 - 2;

2.

- (8) - 1;
- (9) - 2;
- (10) - 1;
- (11) - 2;

" (PRESET), "

1.

- CTRL + 1 - 1;
- CTRL + 2 - 2;
- CTRL + 3 - 3;
- CTRL + 4 - 4;
- CTRL + 5 - 5;

- CTRL + 6 - 6;
- CTRL + 7 - 7;
- CTRL + 8 - 8;
- CTRL + 9 - 9;
- CTRL + 0 - 0;

2.

- (12) - 1;
- (13) - 2;
- (14) - 3;
- (15) - 4;

- F - ;
- CTRL + F - ;
- ALT + CTRL + F - ;

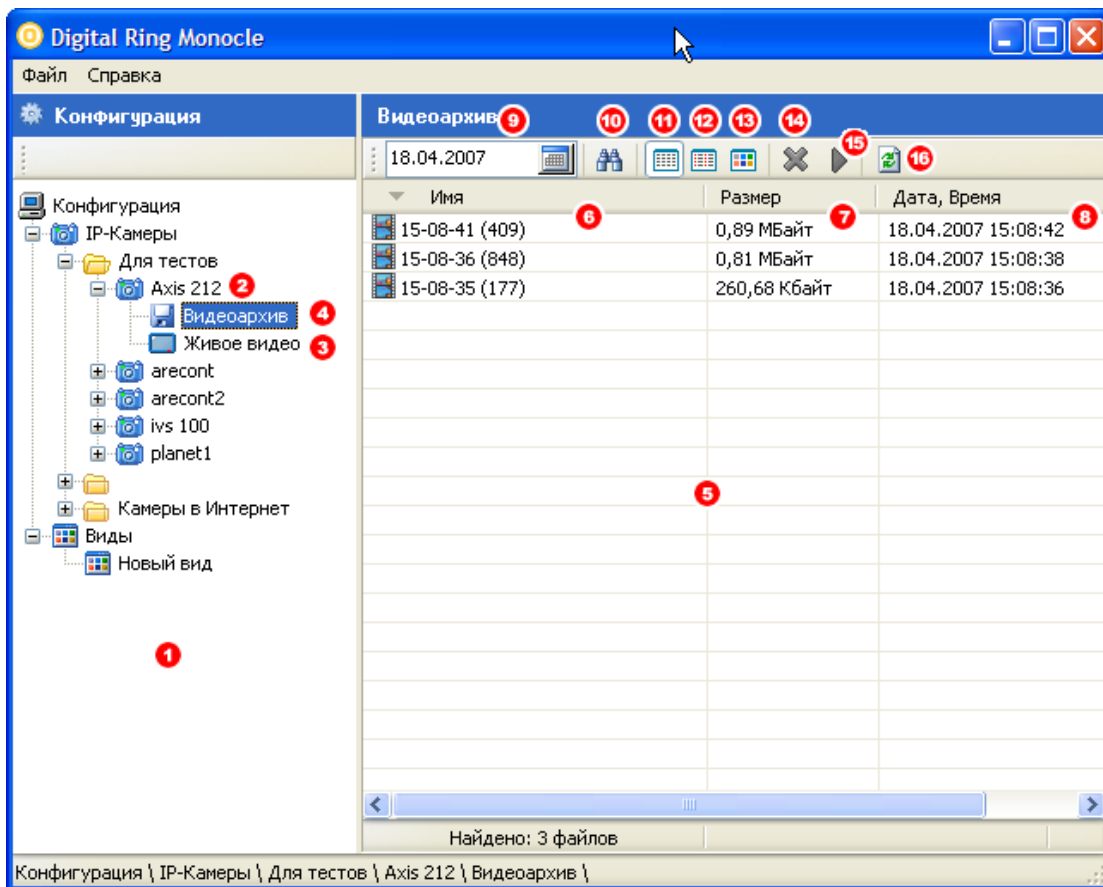
- I - ;
- CTRL + I - ;
- ALT + CTRL + I - ;

- D - ;
- N - ;
- A - ;

7.3

+ (") " "

"DigitalRing Monocle"



(10).

(11)-(13)

(8)

(15)

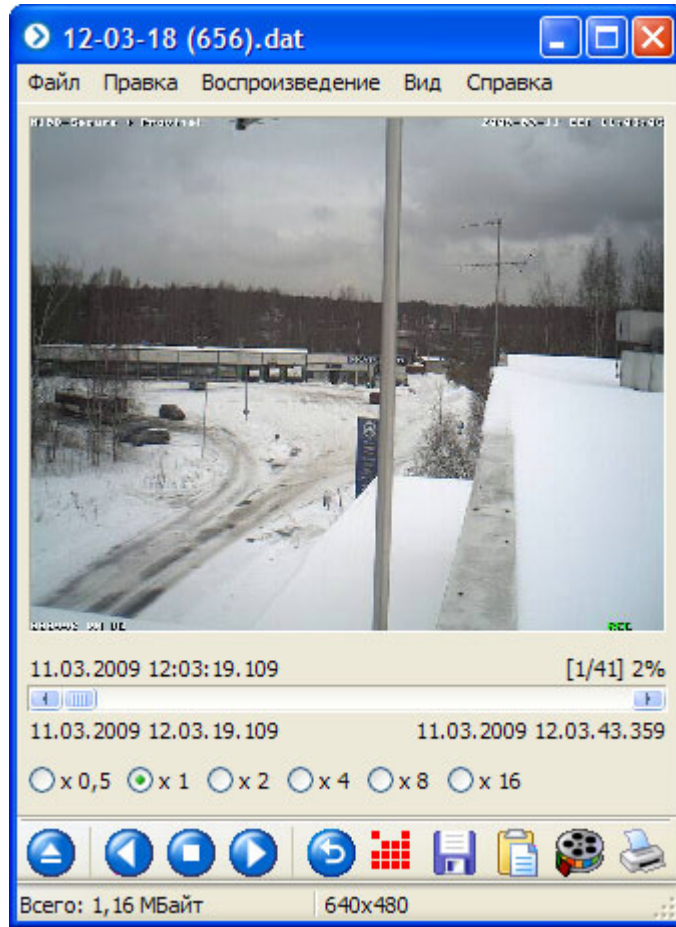
"DigitalRing".

(9)

(7).

(14)

(6),



(16) -

8

DigitalRing Monocle.

8.1

"DigitalRing"

DigitalRing -

IP-

- : support@d-ring.ru;
- : <http://www.d-ring.ru/support>;

'
- , ' , ' ,
, , ,

